



 **2**  
Bedrooms

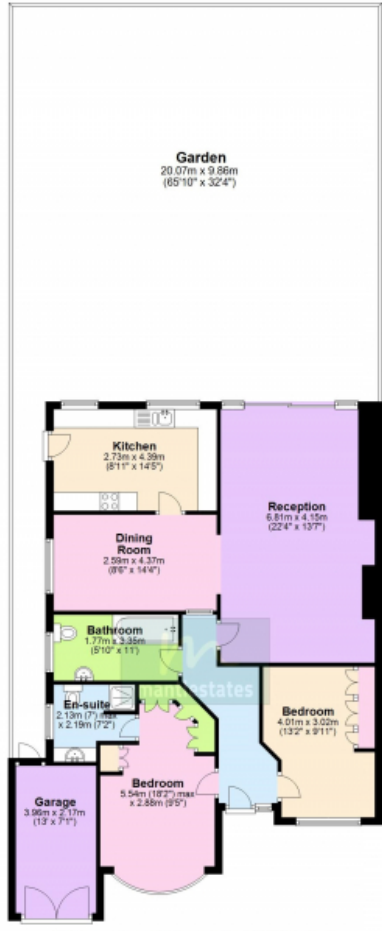
 **2**  
Bathrooms





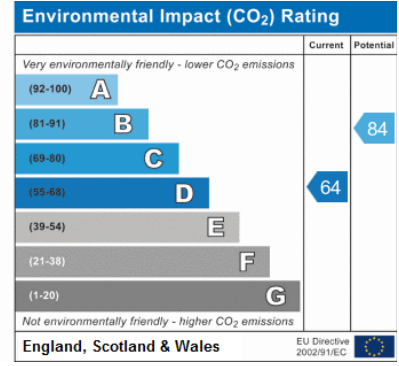
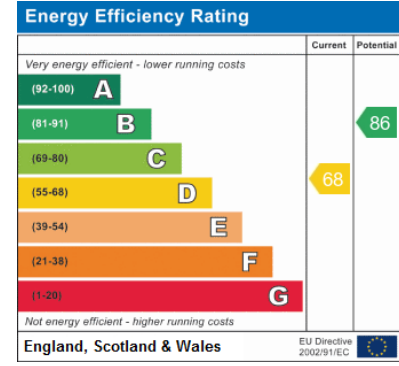
| 2 Bedroom Bungalow | NO STEPS AT FRONT | Driveway for up to 4 cars | LOCATED ON A VERY QUIET ROAD | Well Maintained Rear Garden | En-suite | GARAGE TO SIDE | Good Decorative Order Throughout |

**2 BEDROOM SEMI-DETACHED BUNGALOW | NO STEPS AT FRONT | DRIVEWAY FOR UP TO 2 CARS | LOCATED ON A VERY QUIET ROAD | WELL MAINTAINED REAR GARDEN | EN-SUITE | GARAGE TO SIDE | GOOD DECORATIVE ORDER THROUGHOUT | FORMERLY 3 BEDROOM | CHAIN FREE |**



Total area: approx. 95.9 sq. metres (1032.7 sq. feet)

Whilst every attempt has been made to ensure the accuracy of the floor plan contained here, the measurements of doors, windows, rooms and any other items are approximate and no responsibility is taken for error, omission or representation. The floor plan is for illustrative purposes only.



For more info

