

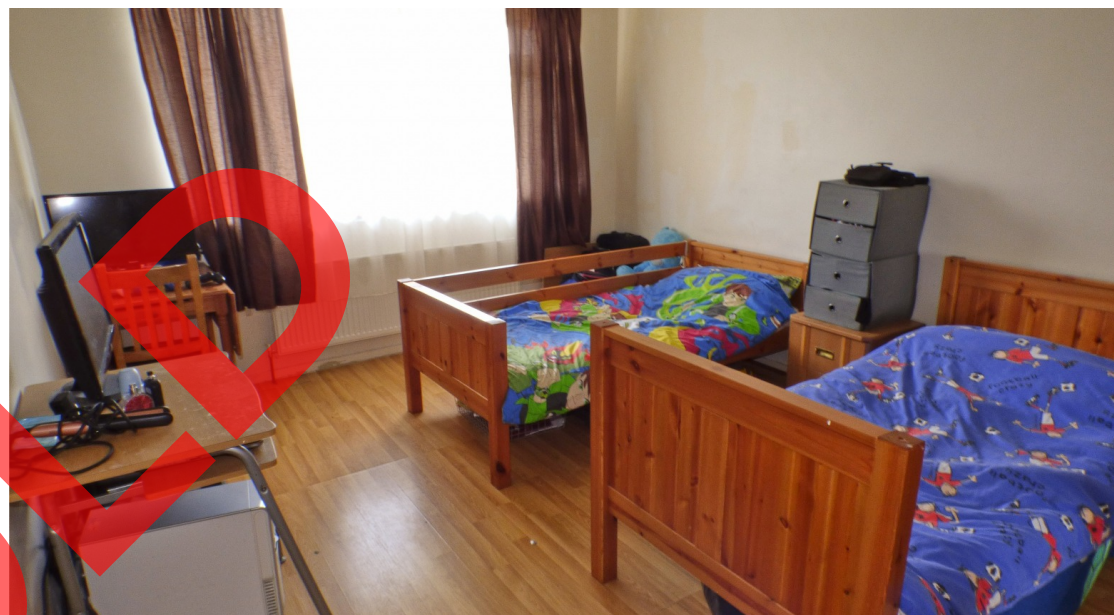


 **2**  
Bedrooms

 **1**  
Bathroom



Offers in the region of £355,000  
Joystone Court, New Barnet, EN4



**\*2 DOUBLE BEDROOM SECOND (TOP) FLOOR FLAT IN PRIVATE PURPOSE BUILT BLOCK\* \*LOCATED WALKING DISTANCE TO NEW BARNET OVERGROUND STATION, SHOPPING FACILITIES & GYMNASIUM\* \*SPACIOUS THROUGHOUT\* \*LONG LEASE\* \*BALCONY\* \*OWN GARAGE\* \*SOUTHERLY FACING ASPECT\* \*ACCESSIBLE TO COCKFOSTERS TUBE STATION, RESTAURANTS & SHOPPING FACILITIES\***

Mantlestates are pleased to offer this spacious second floor flat in a private purpose built block for sale. The property boasts direct access to the loft, a garage and being at a South facing aspect. Ideally located, the flat is walking distance to New Barnet Overground Station, shopping facilities and gymnasium.

Entrance Hall:

Laminate flooring, storage cupboard, double radiator.

Lounge: 16'00 x 11'02

Double glazed door to balcony, laminate flooring, double radiator.

Kitchen: 12'03 x 7'02

Double glazed, square work surface, range of wall and base units, stainless steel sink drainer with mixer taps, part tiled walls, integrated fridge/freezer, built in 5 ring gas hob, extractor and oven, Vaillant boiler.

Bathroom:

Double glazed window to side aspect, panel wash hand basin and mixer taps, double radiator, panel bath with mixer taps and shower attachment, part tiled walls, low level flush water closet, ceramic floor, storage cupboard.

Bedroom: 15'09 x 11'03

Double glazed window, laminate flooring, double radiator.

Bedroom: 13'06 x 9'00

Double glazed window, laminate flooring, double radiator.

Exterior:

Communal gardens, garage, off street parking.