



West Walk, EN4

3 bedroom terraced house for sale - Offers in the region of £585,000

West Walk, EN4

Offers in the region of £585,000 - 3 bedroom terraced house for sale

<https://mantlestates.com/>

Description:

Mantlestates are pleased to offer this 3-bedroom terraced house OVERLOOKING BROOKE. This property is in EXCELLENT CONDITION, double glazed & gas central heating. Also offering a WESTERLY FACING GARDEN and with GARAGE, also the potential to extend into the loft STPP. OFF STREET PARKING 2 cars.

Key features

- ULTRA MODERN 3 BEDROOM TERRACED HOUSE
- RECENT REFURBISHED TO A HIGH STANDARD
- SCENIC VIEWS OVER LOOKING BROOK
- VERY CLOSE TO OAK HILL PARK
- DOUBLE GLAZED & GAS CENTRAL HEATING
- SHORT WALK TO TRANSPORT & LOCAL SHOPPING FACILITIES
- QUIET LOCATION
- CATCHMENT TO POPULAR SCHOOLS
- OFF STREET PARKING & GARAGE AT THE REAR
- SOUTH WESTERLY FACING REAR GARDEN

Porch:

Entrance Hall: Under stairs storage cupboard X2, laminate floor.

Through Lounge: 27'04 x 11'09

Double glazed bay window to front aspect with fitted shutters, brick effect wall with Spanish tiles, brick surround fireplace with hearth, quality laminate

Mantlestates

2A Church Hill Road

East Barnet

EN4 8TB

info@mantlestates.com

020 827 51555



West Walk, EN4

Offers in the region of £585,000 - 3 bedroom terraced house for sale

<https://mantlestates.com/>

floor, door to

Kitchen: 13'00 x 6'09

Double glazed door and window to rear aspect, 30ml thick wooden work surface, range of fitted wall and base level units, non scratch sink with drainer and mixer tap, plumbed for dishwasher, plumbed for dishwasher, plumbed for washing machine, 5 ring gas hob, Bosh double oven, Valiant boiler, Keralite floor.

Landing: Loft access, cupboard, carpet.

Bathroom W/c: Double glazed to rear aspect, low level flush w/c, heated towel rail, tiled panel bath with wall mounted shower, wash hand basin with mixer tap in vanity unit, tiled walls ceramic floor.

Bedroom: 12'09 x 10'02

Double glazed to rear aspect, double radiator, coving , carpet.

Bedroom: 8'00 x 7'00

Double glazed window to front aspect with shutters, single radiator, Carpet.

Bedroom: 14'08 x 10'00

Double glazed tom front with shutters, coving, double radiator, carpet.

Loft via wooden ladder.

17'00 x 11'00 (to eves) 2 skylights, wooden floor.

Mantlestates

2A Church Hill Road

East Barnet

EN4 8TB

info@mantlestates.com

020 827 51555



West Walk, EN4

Offers in the region of £585,000 - 3 bedroom terraced house for sale

<https://mantlestates.com/>

Exterior:

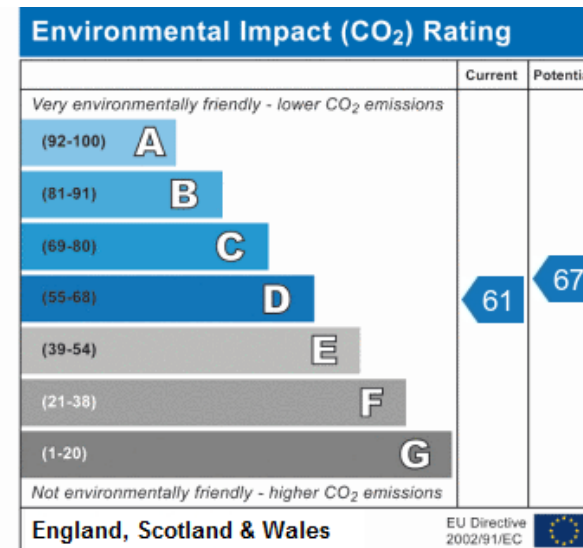
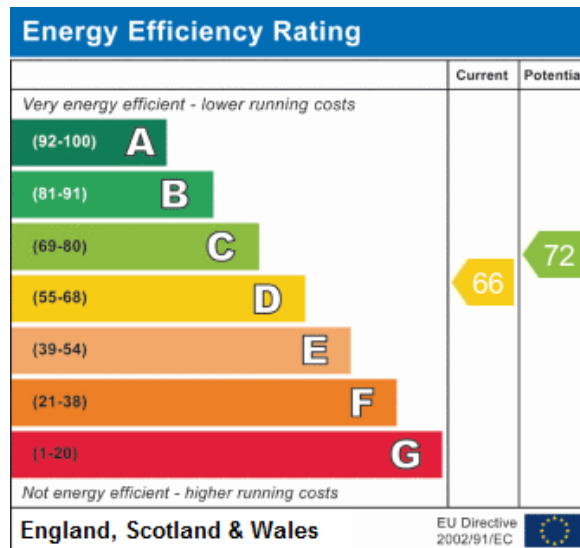
Rear Garden: 61ft

Mainly laid to lawn, small section of artificial lawn. Patio at rear, floral boarder, external tap, garage at rear, shed.

Front: Off street parking.

Features:

RECENT REFURBISHED TO A HIGH STANDARD
SCENIC VIEWS OVER LOOKING BROOK
VERY CLOSE TO OAK HILL PARK
DOUBLE GLAZED & GAS CENTRAL HEATING
SHORT WALK TO TRANSPORT & LOCAL SHOPPING FACILITIES
QUIET LOCATION
OFF STREET PARKING & GARAGE AT THE REAR
SOUTH WESTERLY FACING REAR GARDEN



Mantlestates

2A Church Hill Road

East Barnet

EN4 8TB

info@mantlestates.com

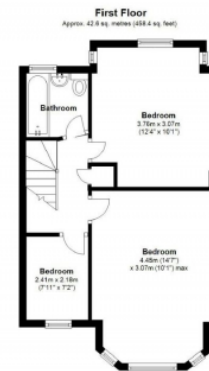
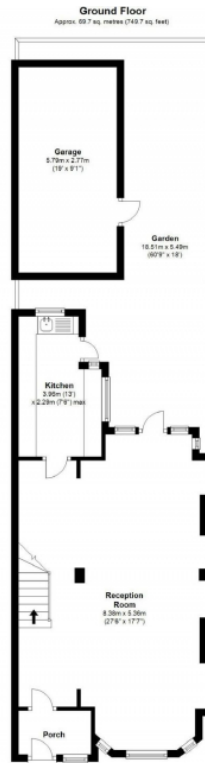
020 827 51555



West Walk, EN4

Offers in the region of £585,000 - 3 bedroom terraced house for sale

<https://mantlestates.com/>



Mantlestates

2A Church Hill Road

East Barnet

EN4 8TB

info@mantlestates.com

020 827 51555



West Walk, EN4

Offers in the region of £585,000 - 3 bedroom terraced house for sale

<https://mantlestates.com/>



Mantlestates

2A Church Hill Road

East Barnet

EN4 8TB

info@mantlestates.com

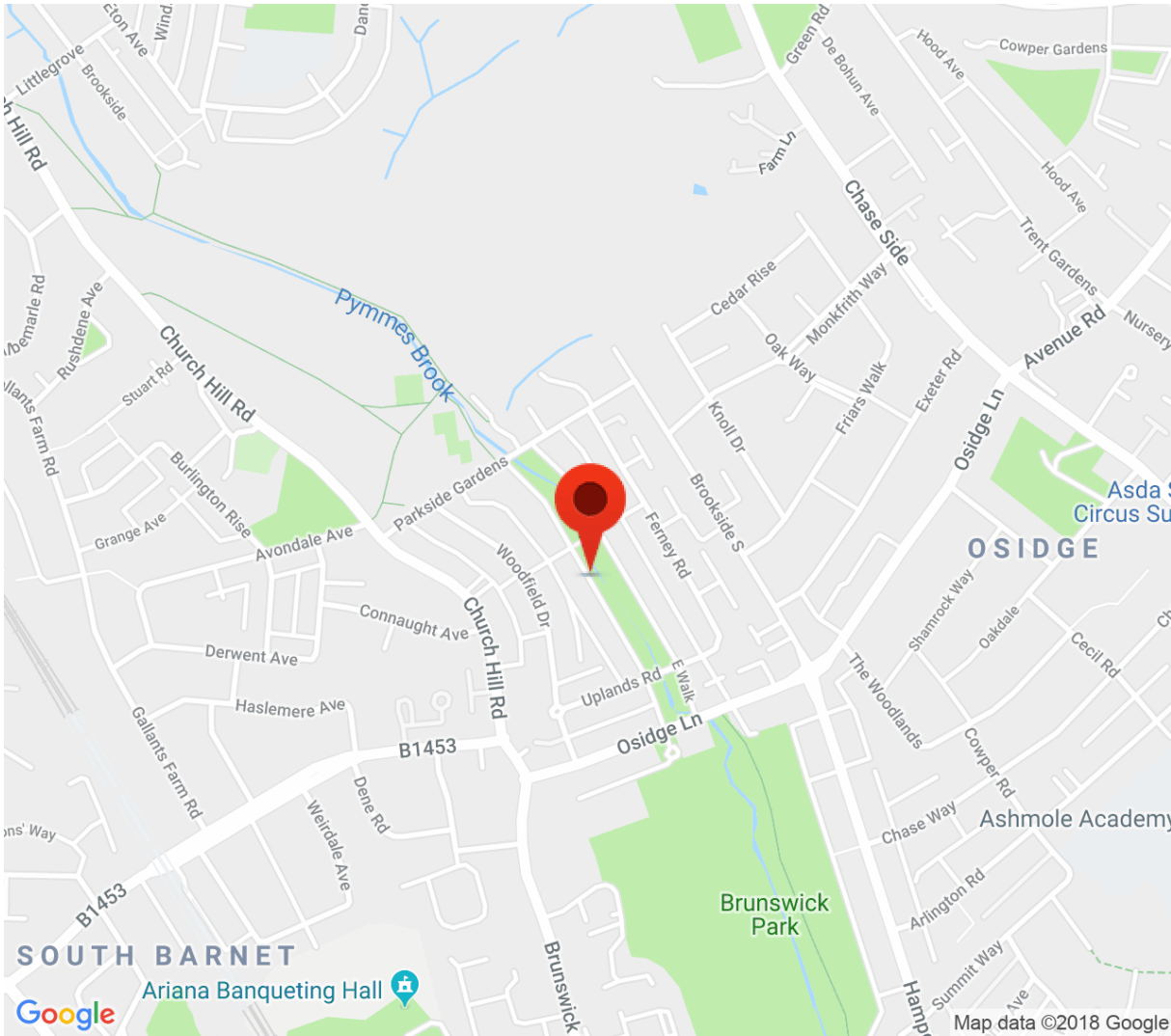
020 827 51555



West Walk, EN4

Offers in the region of £585,000 - 3 bedroom terraced house for sale

<https://mantlestates.com/>



Category :Property for sale

Use this agent code below

MANTLE

(or)



Mantlestates

2A Church Hill Road

East Barnet

EN4 8TB

info@mantlestates.com

020 827 51555

