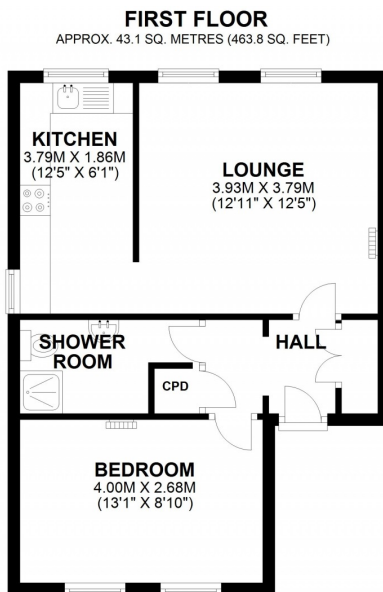




 1
Bedroom

 1
Bathroom



This spacious one bed first floor flat benefits from being located within walking distance of Bluewater shopping centre, and less than 2 miles to Greenhithe station. The property comprises of a communal entrance hall with a staircase leading up to the front door, opening into a lobby with storage cupboard. Straight ahead opens up into a spacious lounge with doors leading off to the double bedroom which overlooks the communal garden, shower room and kitchen. The property also provides double glazing and newly laid carpet throughout the lobby, lounge and bedroom.

RENT: £750
DEPOSIT: £865
EPC BAND D (58)
COUNCIL TAX BAND A (£1287)
UNFURNISHED AND AVAILABLE MID JUNE