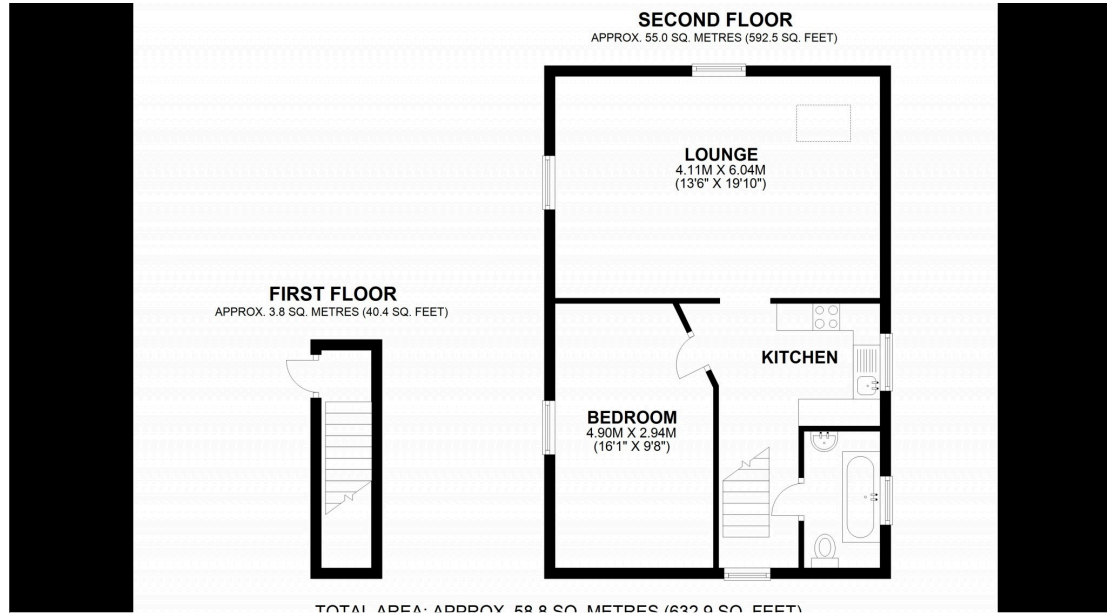




 1
Bedroom

 1
Bathroom



**SORRY
AWAITING
IMAGE**

Redecorated throughout with all new flooring, we are pleased to present this spacious one bedroom second floor flat situated in a period property in the picturesque village of Farningham with good access to M25 and M20 and Farningham Rd train station , approximately 1½ miles away. The property's benefits include a spacious lounge with triple aspect windows, fitted kitchen/diner with gas oven, hob and extractor, washing machine, fridge and separate freezer, fully tiled bathroom with shower over bath, double bedroom includes fitted wardrobes , gas central heating and double glazing. Off Street parking at at the rear for 1 car.

RENT: £875 PCM
DEPOSIT : £1005
COUNCIL TAX BAND B £1565.52
EPC BAND E (E)
UNFURNISHED & AVAILABLE MID AUGUST