



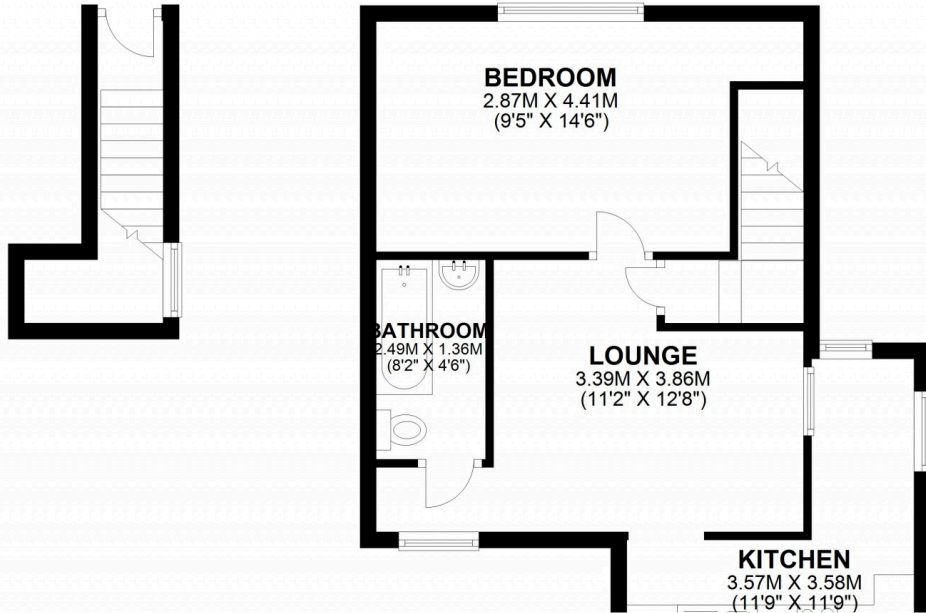
1

Bedroom



1

Bathroom



This one bedroom first floor maisonette is located just an approximate 15 minute walk to Dartford train station and even closer to Dartford town centre and local amenities. This property benefits from having gas central heating, off street parking, a modern kitchen & bathroom and its own rear garden.

RENT: £650

DEPOSIT: £750

COUNCIL TAX: A (£1287)

EPC: C (71)