



 4
Bedrooms

 2
Bathrooms



At a guide price of £400,000 - £415,000, we are delighted to offer this well presented four bedroom end terrace family home. Situated in one of Dagenham Easts premier tree lined residential turnings the property is arranged over three levels with a bright neutral colour pallet throughout. A separate hallway, through reception and kitchen make up the ground floor. Three bedrooms and a family bathroom can be found on the first floor with a master suite to the top level consisting of master bedroom area and en suite showeroom. Outside there's a side access through to the mature rear garden and a private driveway via a dropped kerb to street level. It's a must for the viewing list ! Call today to view via the clients SOLE AGENT - RAMSEY MOORE.

At a guide price of £400,000 - £415,000, we are delighted to offer this well presented four bedroom end terrace family home. Situated in one of Dagenham Easts premier tree lined residential turnings the property is arranged over three levels with a bright neutral colour pallet throughout. A separate hallway, through reception and kitchen make up the ground floor. Three bedrooms and a family bathroom can be found on the first floor with a master suite to the top level consisting of master bedroom area and en suite showroom. Outside there's a side access through to the mature rear garden and a private driveway via a dropped kerb to street level. It's a must for the viewing list ! Call today to view via the clients SOLE AGENT – RAMSEY MOORE.

Through Lounge 23' 1" x 10' 2" widens to 10'12" (7m x 3.1m widens to 3.4m)

Kitchen 6' 8" x 8' 8" (2m x 2.6m)

Bedroom Three

Bedroom Four 5' 11" x 7' 9" (1.8m x 2.4m)

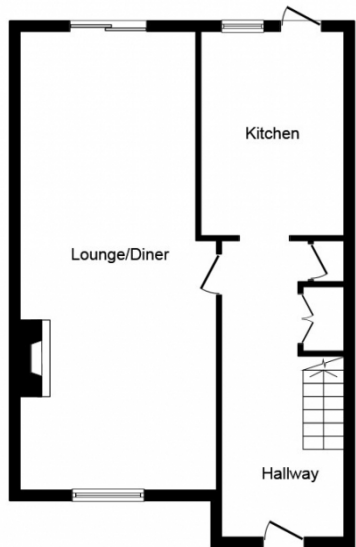
Bedroom Two 11' 2" x 8' 10" (3.4m x 2.7m)

Bathroom *Unmeasured*

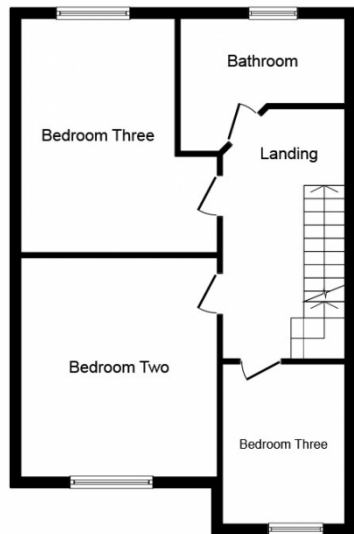
Bedroom One 15' 8" into eaves x 10' 8" (4.8m x 3.3m)

Bathroom *Unmeasured*

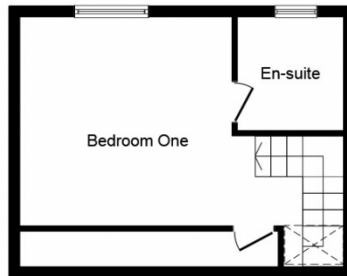
Rear Garden *Approx 55ft*



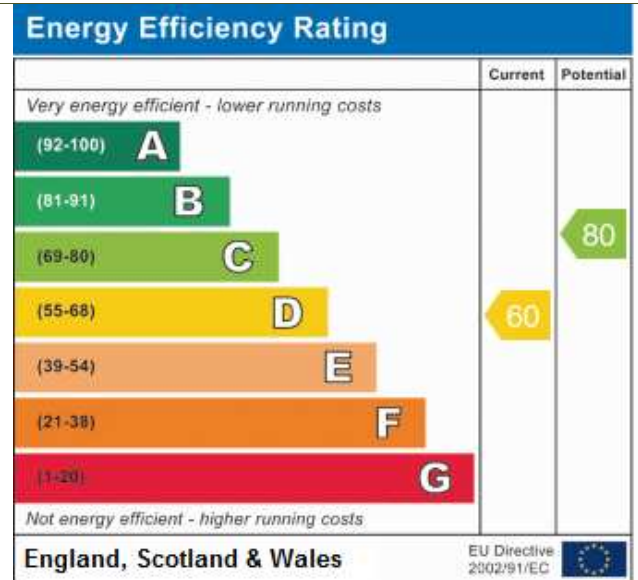
Ground Floor



First Floor



Second Floor



This plan is for illustration purposes only and may not be representative of the property. Plan not to scale.