 3

Bedrooms

 1

Bathroom



Covid secure viewings available now.
Stunning penthouse apartment Hamlet Court Road Westcliff On Sea
Guide Price £240,000 to £250,000 A stone's throw from local shops
and the buzzing Hamlet Court Road high street that offers a range of
different shops, cafes, bars and restaurants. Located on the top floor
and decorated to a high standard.
Plus a short walk to Westcliff mainline train station.

**Hamlet Court
Road
Westcliff On
Sea**

This stunning Penthouse apartment with sea views is a must see! A stone's throw from local shops and the buzzing Hamlet Court Road high street that offers a range of different shops, cafes, bars and restaurants. The Penthouse is in prime location for links to London via Westcliff mainline station and it is a stone's throw away.

Decorated to a high standard throughout and the added benefit of high ceilings, boasting a bright living space, double glazing and central heating.

With Three Double Bedroom this penthouse apartment offers so much for such an amazing price!

The current lease is approximately 165 years. The owner has informed us the current Service charge and ground rent is around £800 per year. This is a must view as the price and condition is perfect for a first time buyer.

Please call ramsey moore to view 01702 908616 Guide price **£240,000 to £250,000**

Communal Entrance

Stairs from a communal entrance lead to the second floor.

Entrance

Features built in storage cupboards.

Lounge/Diner *14'5 x 17'4 > 12'7*

With two double glazed skylite windows, two radiators and dado rails.

Kitchen *9'3 x 8*

Fitted kitchen with intergrated fridge freezer, wine fridge and washing machine. Roll top work surfaces, stainless steel sink & drainer. Intergrated Oven and extrator hood. Radiator and double glazed skylite windows with sea view.

Bedroom 1 *12'2 x 14'2 > 11'6*

Double glazed window, radiator, dado rail and built in storage cupboard.

Bedroom 2 *13'1 > 10'4 x 11'4*

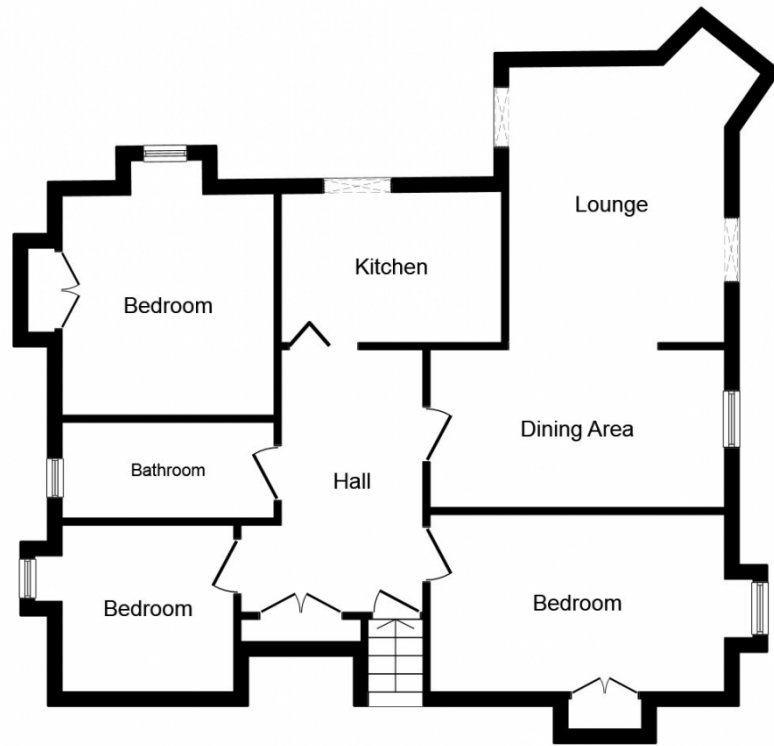
Double glazed window, radiator, dado rail and built in storage cupboard.

Bedroom 3 *17'11 > 14'9 x 11'4*

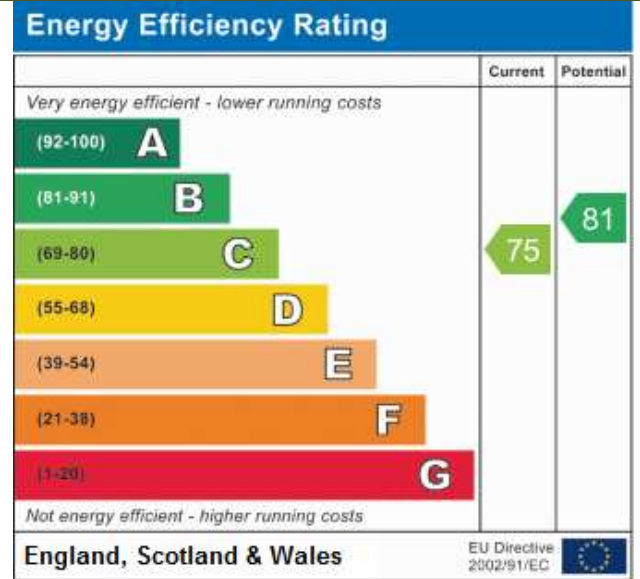
Double glazed window, radiator, dado rail and built in storage cupboard.

Bathroom *11'7 x 4'7*

WC, hand basin inset vanity unit, bath and electric shower. Double glazed skylight window, spotlights and radiator.



Floor Plan



This plan is for illustration purposes only and may not be representative of the property. Plan not to scale.

