



Offers in the region of £250,000
Fairfax Drive, Westcliff-On-Sea



3

Bedrooms



1

Bathroom

50 Hamlet Court Road, Westcliff On Sea, Essex, SS0 7LX |
westcliff@ramseymoore.co.uk

01702908616



Offers in the region of £250,000 Fairfax Drive, Westcliff-On-Sea



CASH BUYERS ONLY. Located on Fairfax drive. Ramsey Moore are sole agents to this Two/Three Bedroom terrace house in need of modernisation. The property requires work and could become an great property in a prime location. The big benefit is the 65ft rear garden with off street parking to rear. The location offers easy access into Southend Town centre and is within walking distance to Southend University Hospital. Being sold chain free. **CASH BUYERS ONLY** Guide price £250,000. **OPEN DAY SATURDAY 30TH OCTOBER 11AM - 12PM**

CASH BUYERS ONLY

Located on Fairfax drive. Ramsey Moore are sole agents to this Two/Three Bedroom terrace house in need of modernisation.

The property requires work and could become an great property in a prime location. The big benefit is the 65ft rear garden with off street parking to rear. The location offers easy access into Southend Town centre and is within walking distance to Southend University Hospital.

Being sold chain free. **CASH BUYERS ONLY** Guide price £250,000. OPEN DAY SATURDAY 30TH OCTOBER 11AM - 12PM

Front door

To hallway with access to through/lounge.

Through/Lounge *7.80m x 4.11m (25.60ft x 13.50ft)*

Double glazed window to front, chimney breast, radiator, stairs to first floor, storage cupboard under stairs, door to lean-to, access to kitchen.

Kitchen *2.90m x 2.32m (9.52ft x 7.61ft)*

Double glazed windows to side and rear, base storage units, work surface, sink and drainer, wall mouted boiler, tiled flooring.

Lean-to

Storage area, window and door to rear garde.

Rear Garden

Measuring approximately 65ft. Off street parking to rear via gates.

First Floor Landing

Access to all rooms.

Bedroom One *4.13m x 3.56m (13.55ft x 11.67ft)*

Double glazed windows to front, radiator.

Bedroom Two *2.85m x 2.26m (9.36ft x 7.40ft)*

Double glazed window to rear, radiator, wooden flooring.

Bedroom Three *2.45m x 2.03m (8.03ft x 6.67ft)*

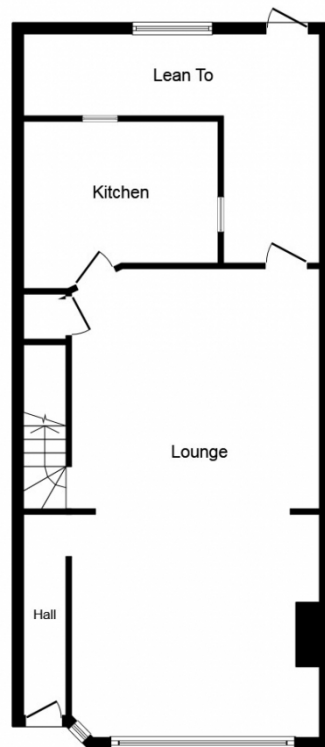
Window to rear, radiator.

Bathroom

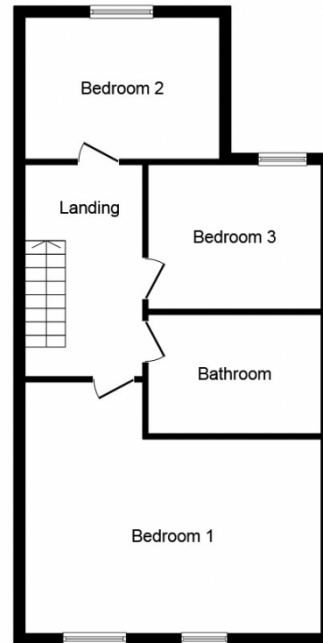
WC, hand wash basin, free standing bath, extractor fan.



Offers in the region of £250,000
Fairfax Drive, Westcliff-On-Sea



Ground Floor



First Floor



This plan is for illustration purposes only and may not be representative of the property. Plan not to scale.

