

the floorplan...

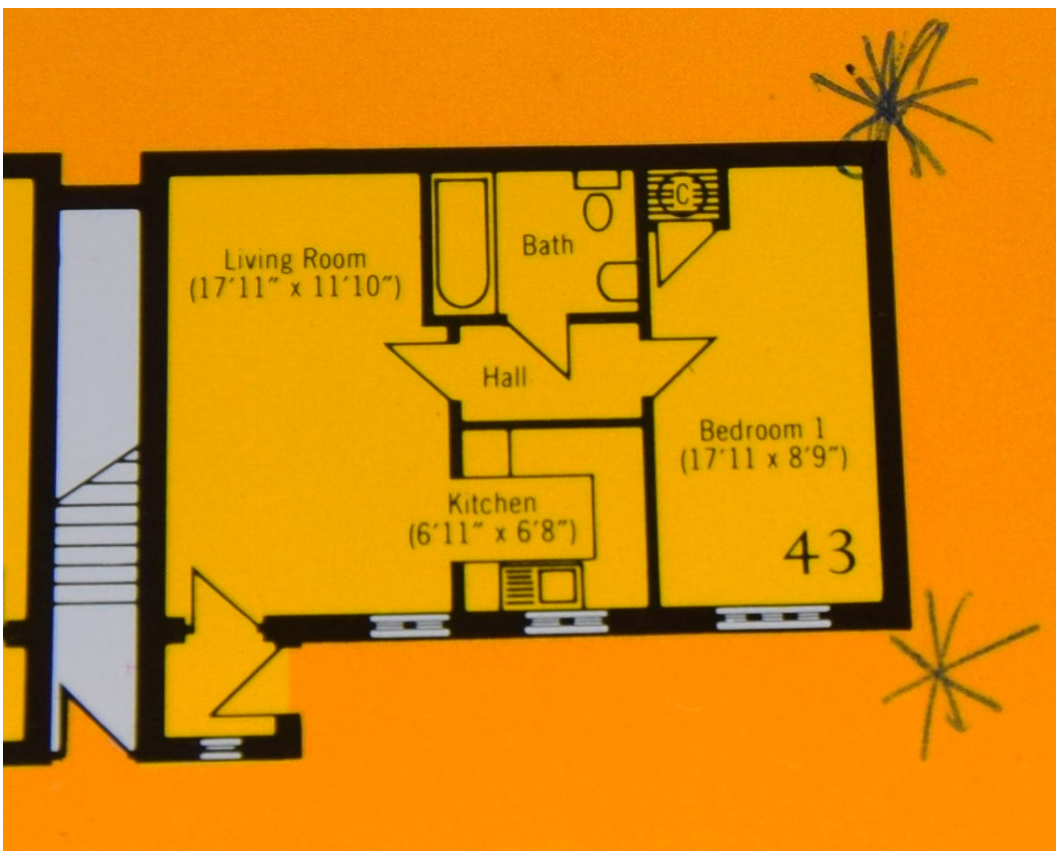


Rolitex Estates

RESIDENTIAL SALES & LETTINGS - PROPERTY AGENTS

0208 813 0777

info@rolitex.co.uk



Rolitex Estates are pleased to offer this lovely one bedroom flat in Greenford.

more details from...

call: **Rolitex Estates**:0208 813 0777

email:info@rolitex.co.uk

web:info@rolitex.co.uk



Rolitex Estates

RESIDENTIAL SALES & LETTINGS - PROPERTY AGENTS

Asking Price
£275,000

Greenford, UB6



Rolitex Estates are pleased to offer this lovely one bedroom flat in Greenford. The property benefits from spacious living room, fully fitted kitchen, bathroom with a bathtub, and a double bedroom. Further benefits include double glazing, laminate flooring and parking space. Located within short walking distance to Greenford station- Central line, easy access to A40 motorway, bus links to Heathrow and Wembley, local shops and many more amenities. New Lease on Completion.

