

the floorplan...

**BIRKBECK AVENUE
GREENFORD UB6**



APPROX. GROSS INTERNAL FLOOR AREA 1302.43 SQ. FT / 121.00 SQ. M

WHILST EVERY ATTEMPT HAS BEEN MADE TO ENSURE THE ACCURACY OF THE FLOOR PLAN CONTAINED HERE, MEASUREMENTS OF DOORS, WINDOWS, ROOMS AND ANY OTHER ITEMS ARE APPROXIMATE AND NO RESPONSIBILITY IS TAKEN FOR ANY ERROR, OMISSION, OR MIS-STATEMENT. THIS PLAN IS FOR ILLUSTRATIVE PURPOSES ONLY AND SHOULD BE USED AS SUCH, BY ANY PROSPECTIVE PURCHASER. FLOOR PLANS ARE NOT DONE TO "SCALE".



Rolitex Estates are pleased to offer this stunning 6 bedroom terraced house in Greenford which has been completely refurbished to the highest specification.

more details from...

call: Rolitex Estates: 0208 813 0777

email: info@rolitex.co.uk

web: info@rolitex.co.uk



Rolitex Estates
RESIDENTIAL SALES & LETTINGS - PROPERTY AGENTS

Asking Price
£799,999

London, UB6



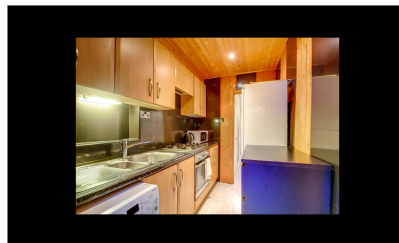
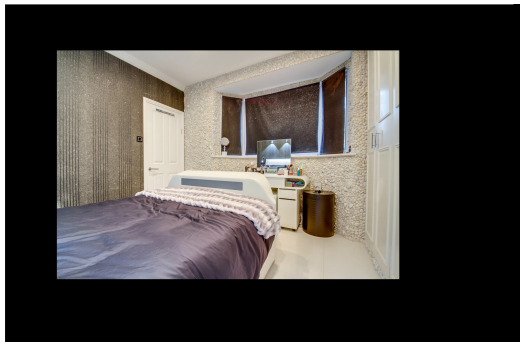
Rolitex Estates are pleased to offer this stunning 5/6 bedroom terraced house in Greenford which has been completely refurbished to the highest specification. The property benefits from:

Ground floor



Hallway: Touch light switches, LED spotlights, water underfloor heating, tiled floor and video doorbell system.

Living room: Water underfloor heating, tiled floor, touch light switches, suspended ceiling with LED lighting strip, LED lighting strip behind TV unit and surround sound system.



Bedroom 1: LED spotlights, touch light switches, bed side reading lights, water underfloor heating, tiled floor, blackout blinds, bespoke fitted wardrobe

Bathroom: LED spotlights, marble tiles, mosaic walls, water underfloor heating

Kitchen: Gloss kitchen units, granite worktop, LED lights & strips, water underfloor heating, kitchen appliances: build in Zanussi (cooker, microwave, hob), dishwasher, new boiler, tumble dryer

Utility room: water underfloor heating, tiled floor, washing machine, sink, BEKO cooker

Landing: LED spotlights, video doorbell system, carpet

1st Floor

Bedroom 2: LED spotlights, laminate flooring, bespoke fitted wardrobe, blackout blinds

Bedroom 3: : LED spotlights, laminate flooring, bespoke fitted wardrobe, blackout blinds, touch lights switches,

Bedroom 4: LED spotlights, electric fireplace, laminate flooring, bespoke fitted wardrobe, blackout blinds, touch lights switches

Bathroom: Ceramic tiles, electric underfloor heating, heated walls and mirrors, smart toiler (heating, illuminated, jet massage)

2nd Floor

Bedroom 5: LED spotlights, laminate flooring, bespoke fitted wardrobe, blackout blinds, touch lights switches

Bedroom 6: LED spotlights, ample storage, laminate flooring, bespoke fitted wardrobe, blackout blinds, touch lights switches

Toilet: LED spotlights, touch light switches, electric ventilator, electric underfloor heating,

marble tiles , touch lights switches

Landing: ample storage space, touch light switches, LED spotlights

Outside

Patio/Garden: covered decking area, electric lights, solar lights, water fountain

Summer house: electric fire place, bespoke fitted shelves and desk

Located minutes away from Greenford station (central line) bus links, local shops, schools and many more amenities.