

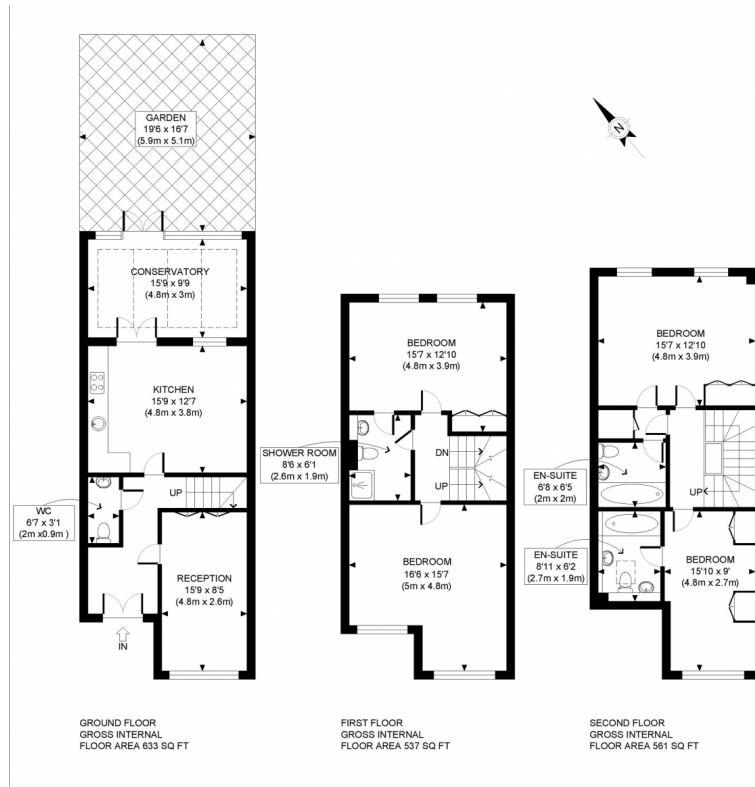
the floorplan...



**Rolitex Estates**  
RESIDENTIAL SALES & LETTINGS - PROPERTY AGENTS

0208 813 0777

info@rolitex.co.uk



more details from...

call: Rolitex Estates:0208 813 0777

email:info@rolitex.co.uk

web:info@rolitex.co.uk



**Rolitex Estates**  
RESIDENTIAL SALES & LETTINGS - PROPERTY AGENTS

Asking Price  
£1,150,000

NW6





Rolitex Estates are delighted to offer this well-presented 4 bedroom townhouse located in a secure & private development in Brondesbury Park. The property benefits from four double bedrooms, two en-suite, shower room on the first floor, guest w/c, two reception rooms, fully fitted kitchen with conservatory.



Honeyman Close benefits from secure entrance gates, CCTV, caretaker and includes access to a Residents Only Swimming pool, Gym and Sauna. Brondesbury Park is well located for amenities on Salisbury Road as well as the open spaces of Queen's Park



Offered chain-free.

Viewings highly recommended.