

the floorplan...

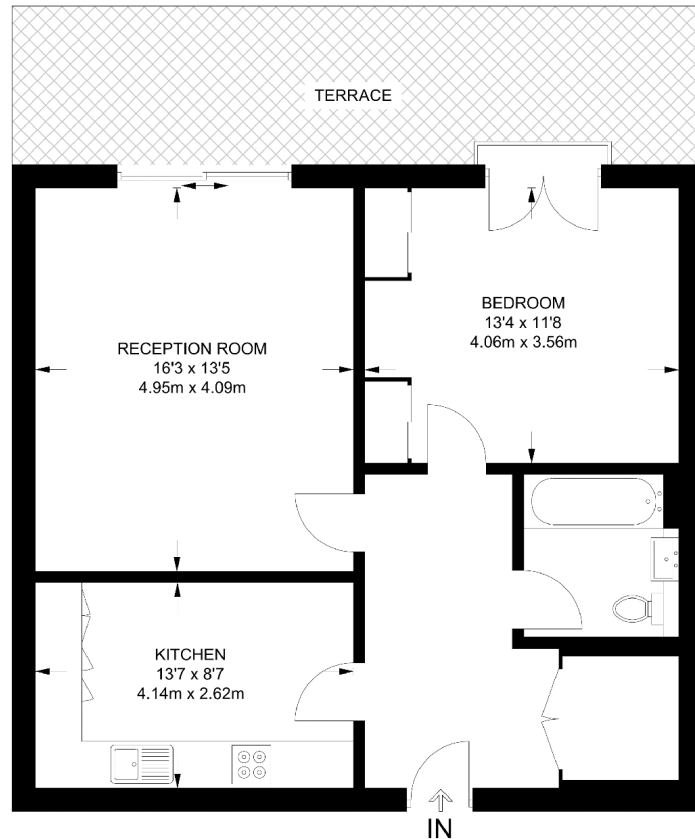


Rolitex Estates
RESIDENTIAL SALES & LETTINGS - PROPERTY AGENTS

0208 813 0777

info@rolitex.co.uk

APPROXIMATE FLOOR AREA = 698 SQ FT / 64.9 SQ M



Surveyed and drawn in accordance with the International Property Measurement Standards (IPMS 2: Residential) FOXTONS.CO.UK



Rolitex Estates are pleased to offer this stylish and modern one bedroom flat in development in Chiswick. This stunning flat offers bright and contemporary interiors throughout with private terrace, concierge service and excellent location.



more details from...

call: **Rolitex Estates**:0208 813 0777

email: info@rolitex.co.uk

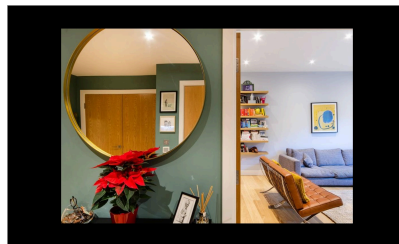
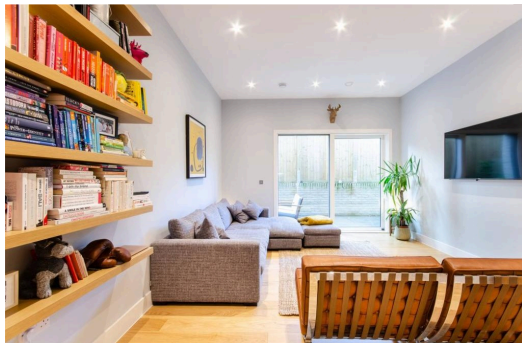
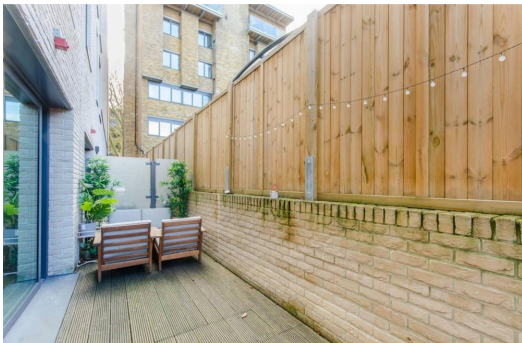
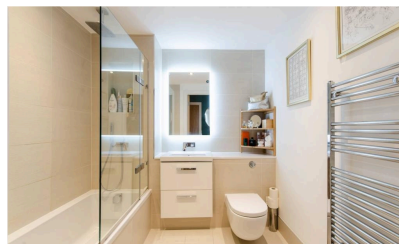
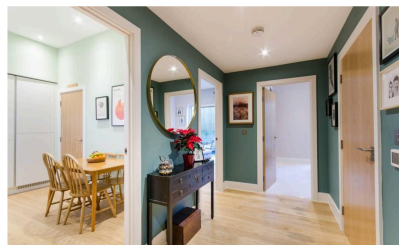
web: info@rolitex.co.uk



Rolitex Estates
RESIDENTIAL SALES & LETTINGS - PROPERTY AGENTS

Asking Price
£550,000

London, W4 4



- Rolitex Estates are pleased to offer this stylish and modern one bedroom flat in development in Chiswick. This stunning flat offers bright and contemporary interiors throughout with private terrace, concierge service and excellent location.

- Chiswick High Road plays host a wide range of shops, bars, cafes and restaurants with Gunnersbury station (District Line) and Chiswick Park (National Rail) also within easy reach.

- Excellent 1 bedroom apartment
 - Fabulous reception room
 - Eat in fitted kitchen
- Double bedroom with fitted cupboards
 - Sleek bathroom
 - Wooden flooring

- Concierge service
- Central Chiswick location