



Monument Road, Edgbaston, B16
Office Space near City Centre - £390 pcm

Monument Road, Edgbaston, B16

£390 pcm - Office Space near City Centre

www.spectra-property.co.uk

Description:

Opportunity to set up office close to City Centre at affordable rents. The property is in a prominent location on Monument Road and is accessed via Reservoir Road in Edgbaston, Birmingham. and is approx 1.5 miles from The Birmingham City Centre. Easy access to public public transport, on road parking. Property is walking distance to Five Ways Roundabout. The shared toilets, kitchen and hallways are regularly cleaned and maintained by the management. Rent is inclusive of VAT @20%

Features:

Shared Kitchen

Shared Toilets

Cleaner for Communal Areas

Spectra Property Services

279 Vicarage Road

Kings Heath Birmingham

B14 7NE

gurdip@spectra-property.co.uk

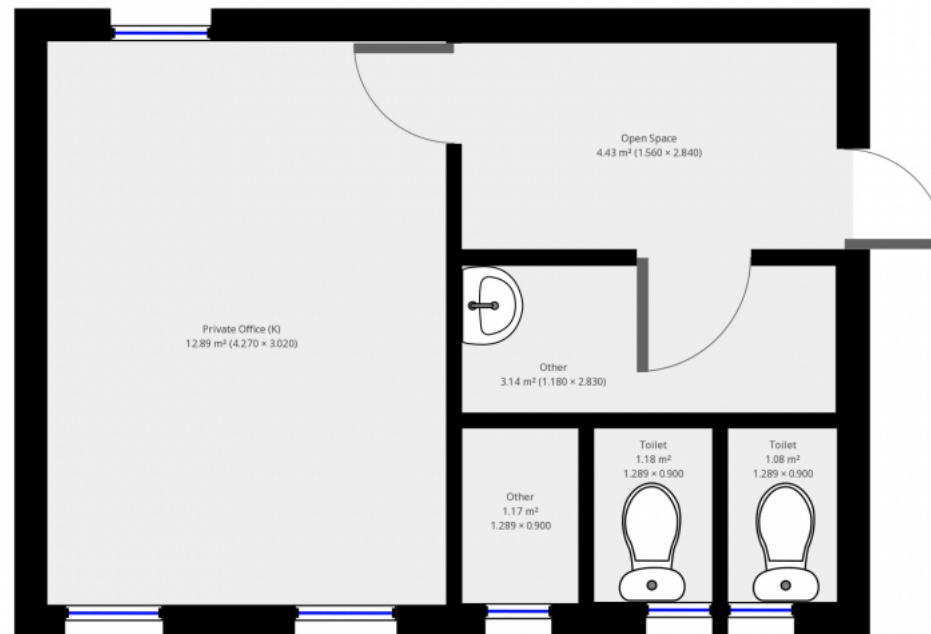
0121 444 5252



Monument Road, Edgbaston, B16

£390 pcm - Office Space near City Centre

www.spectra-property.co.uk



THIS FLOORPLAN IS PROVIDED WITHOUT WARRANTY OF ANY KIND. SPECTRA PROPERTY SERVICES DISCLAIMS ANY WARRANTY INCLUDING, WITHOUT LIMITATION, SATISFACTORY QUALITY OR ACCURACY OF DIMENSIONS.

Spectra Property Services

279 Vicarage Road

Kings Heath Birmingham

B14 7NE

gurdip@spectra-property.co.uk

0121 444 5252



Monument Road, Edgbaston, B16

£390 pcm - Office Space near City Centre

www.spectra-property.co.uk



Spectra Property Services

279 Vicarage Road

Kings Heath Birmingham

B14 7NE

gurdip@spectra-property.co.uk

0121 444 5252



Monument Road, Edgbaston, B16

£390 pcm - Office Space near City Centre

www.spectra-property.co.uk



Category :Properties for rent

Available from : 11 Oct 2018

Admin Fees : £100.00



Use this agent code below

ERABUT

(or)



Spectra Property Services

279 Vicarage Road

Kings Heath Birmingham

B14 7NE

gurdip@spectra-property.co.uk

0121 444 5252

