



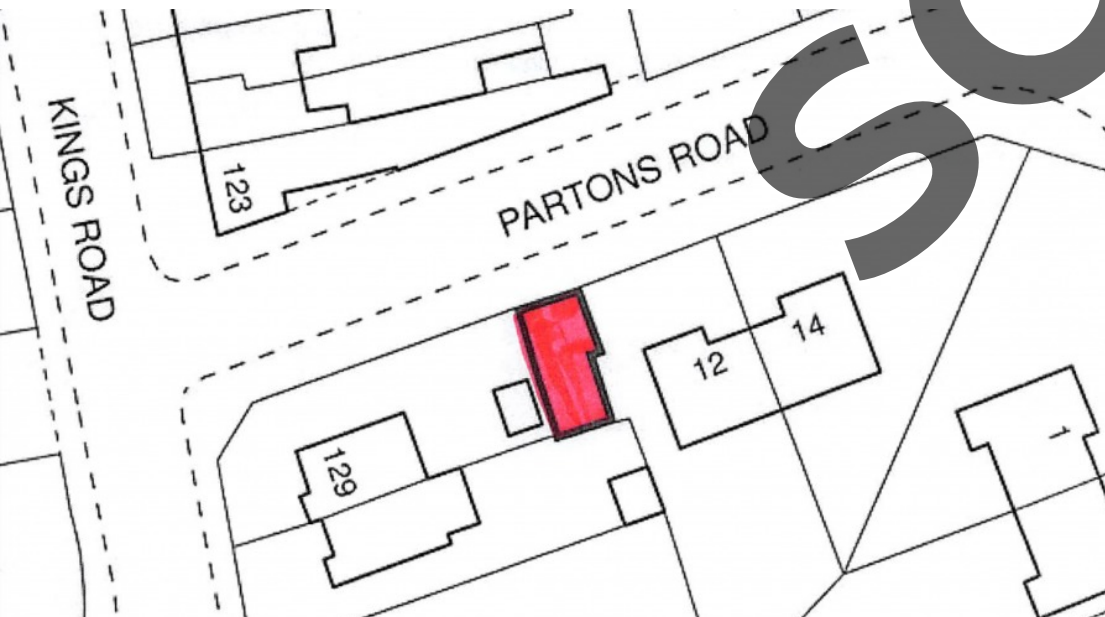
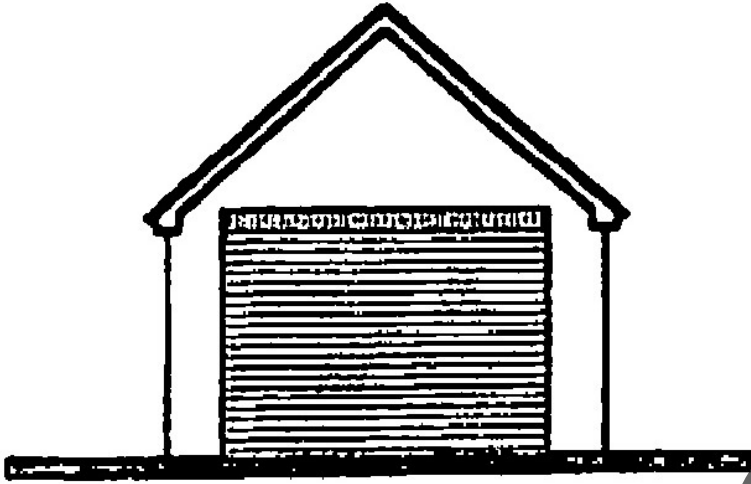
0

Bedroom



0

Bathroom



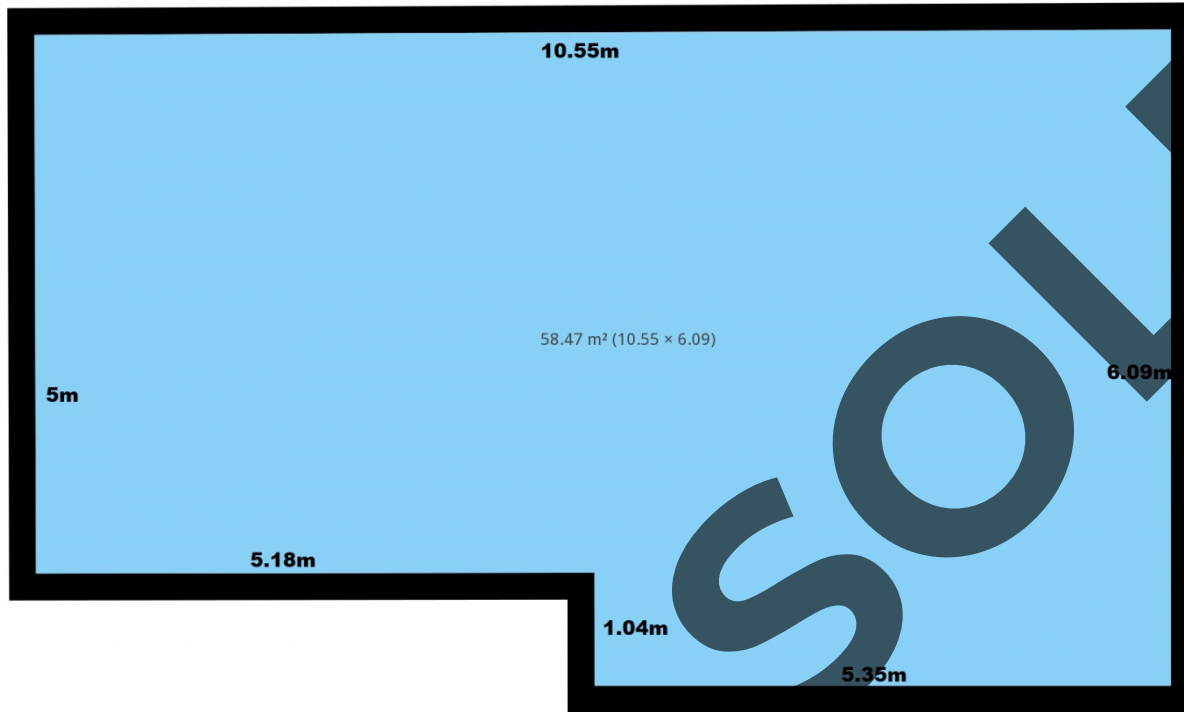
A rare opportunity to buy a small plot of land with planning permission for a garage in a residential estate in Kings Heath. Partons Road is a pleasant street in a residential area of Kings Heath. The property's boundary is currently fenced. This is a rare opportunity for neighbours and investors.

A rare opportunity to buy a small plot of land with planning permission for a garage in a residential estate in Kings Heath. Boundary is fenced with temporary access. Partons Road is a pleasant street in a residential area of Kings Heath. This is a rare opportunity for neighbours and investors.

Planning application no 2019/10260/PA

Buyers to pay vendor cost of £1500.

SOLD



P
A
R
T
O
N
S

R
O
A
D

THIS FLOOR PLAN IS PROVIDED WITHOUT WARRANTY OF ANY KIND. SPECTRA PROPERTY SERVICES DISCLAIMS ANY WARRANTY INCLUDING, WITHOUT LIMITATION, A SATISFACTORY QUALITY OR ACCURACY OF MEASUREMENTS.

