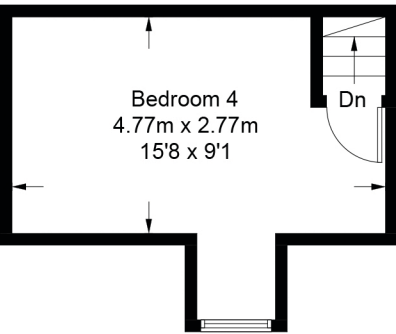


418 Rotten Park Road

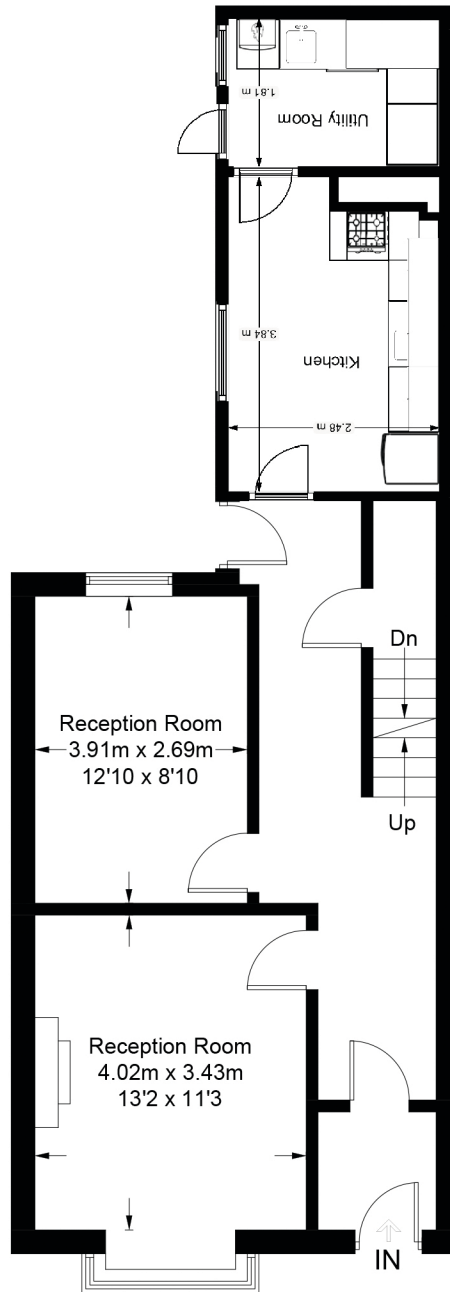
Approximate Gross Internal Area = 133.5 sq m / 1437 sq ft

Basement = 17.5 sq m / 188 sq ft

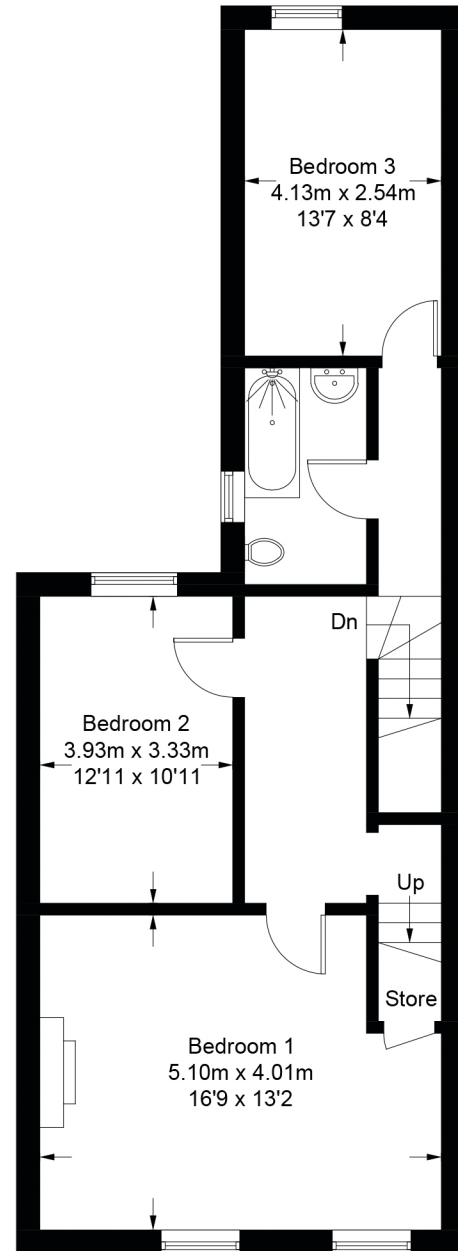
Total = 151 sq m / 1625 sq ft



Second Floor



Ground Floor



First Floor

This plan is for layout guidance only. Not drawn to scale unless stated. Windows and door openings are approximate. Whilst every care is taken in the preparation of this plan, please check all dimensions, shapes and compass bearings before making any decisions reliant upon them.