



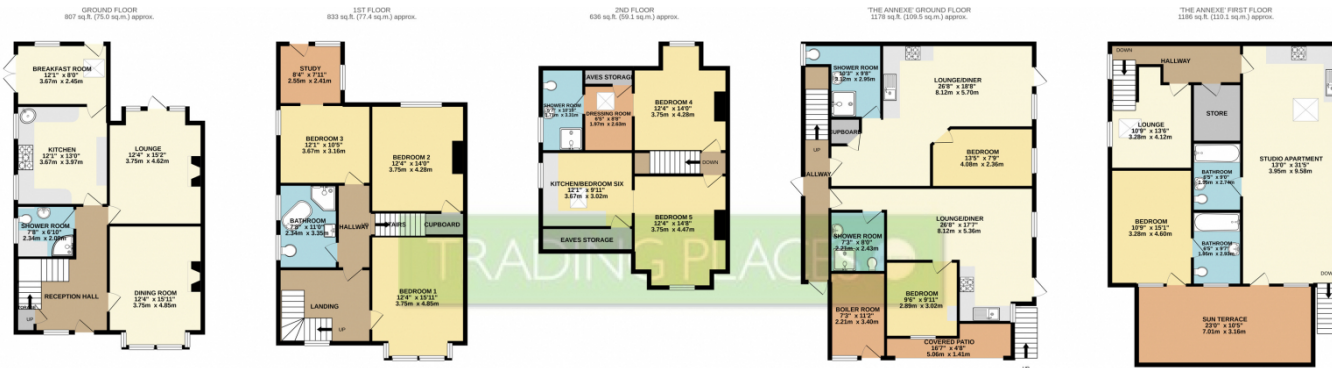
 6
Bedrooms

 2
Bathrooms





A beautiful period, multi-generational 4800SQFT family home with an abundance of space and a large annexe attached – Trading Places Estate Agents are delighted to offer this five double bedroom semi-detached Victorian property in a desirable location close to Urmston town centre and the meadows. Set over three floors, this immaculately presented property boasts original features throughout including stained glass windows, open fires and parquet flooring. The large annexe attached by a walkway has three apartments; two of which have been designed to be wheel-chair user friendly, a guest room with lounge and en-suite facilities. There is also additional storage space. The outside space has gated parking for four vehicles; a decked patio area, an enclosed raised-bed allotment area, a garden area laid to lawn and a court-yard with the obligatory shed. There is also a distinctive open terrace that enjoys the sun with a covered, a terrace underneath for those rainy Manchester days! Previously Painters Dance Studio, this property offers endless opportunities and flexibility. This property is unique. Please arrange a viewing at your earliest convenience to avoid disappointment.



TOTAL FLOOR AREA : 4639 sq.ft. (431.0 sq.m.) approx.

Whilst every attempt has been made to ensure the accuracy of the floorplan contained here, measurements of doors, windows, rooms and any other items are approximate and no responsibility is taken for any error, omission or mis-statement. This plan is for illustrative purposes only and should be used as such by any prospective purchaser. The services, systems and appliances shown have not been tested and no guarantee as to their operability or efficiency can be given.
Made with Metropix ©2020



EPC

Coming soon

