



 3
Bedrooms

 1
Bathroom





Entrance Hallway

UPVC double glazed entrance door and UPVC double glazed frosted window to side. Original wooden flooring. Double panel gas central heating radiator. Access to gas/electric cupboard. Staircase to first floor. Understairs storage housing boiler.

Through lounge/dining room *24'5" x 10'11" (7.44m x 3.33m)*

UPVC double glazed box bay window to front. Original wooden floor. Two double panel gas central heating radiators. Double glazed sliding doors to rear.

Kitchen *6'7" x 15'9" (2m x 4.8m)*

Double glazed window. Fitted with a range of wall and base units incorporating a sink unit with mixer tap. Tiled splash back. Cooker point. Plumbed for automatic washing machine. Space for fridge/freezer. UPVC double glazed door to rear garden.

Landing

UPVC double glazed frosted window to half landing.

Bedroom one *13'1" x 9'1" (4m x 2.77m)*

UPVC double glazed box bay window to front. Wooden floor. Single panel gas central heating radiator. Built-in wardrobes.

Bedroom two *13'5" x 9'9" (4.1m x 2.97m)*

UPVC double glazed window. Single panel gas central heating radiator. Built in wardrobes.

Bedroom three *8'2" x 10'4" (2.5m x 3.15m)*

UPVC double glazed window. Single panel gas central heating radiator. Wood floor.

Bathroom *5'5" x 6'11" (1.65m x 2.1m)*

UPVC double glazed frosted window. Panel bath with shower over and a pedestal wash hand basin with mixer tap. Wood floor. Single panel gas central heating radiator.

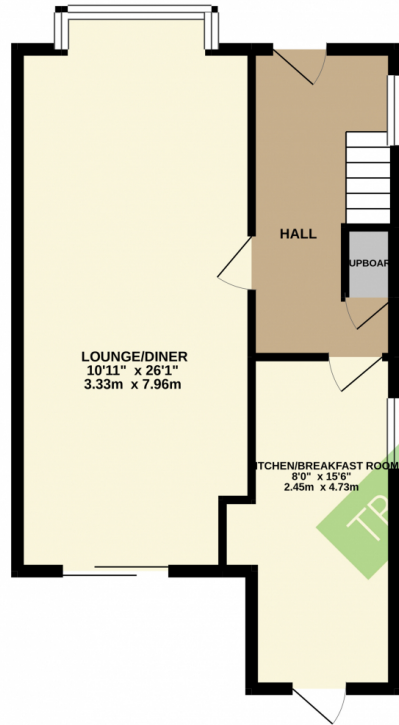
Separate WC *5'3" x 2'5" (1.6m x 0.74m)*

UPVC double glazed window. Low level WC.

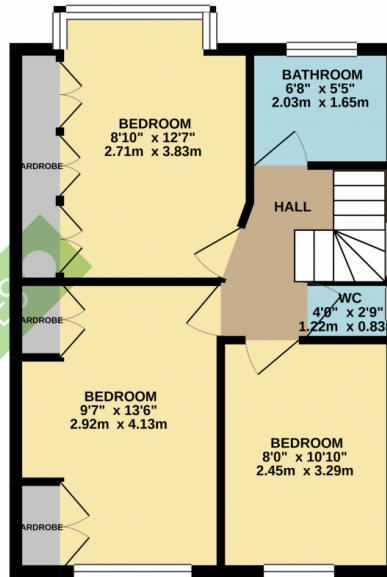
Outside

Tarmac garden and drive to front and side providing off road parking and leads to detached garage to the rear. Tarmac patio area and garden mainly laid out to lawn which is privately enclosed to the rear of the property.

GROUND FLOOR
478 sq. ft. (44.4 sq. m.) approx.



1ST FLOOR
441 sq. ft. (41.0 sq. m.) approx.



TOTAL FLOOR AREA: 920 sq. ft. (85.4 sq. m.) approx.
Made with Metroplex ©2020

