



3

Bedrooms



1

Bathroom

27





THREE BEDROOM SPACIOUS END TERRACED WHICH IS TASTEFULLY PRESENTED THROUGHOUT. Situated in a great location for all local amenities, good transport links offering quick access into the City Centre, Media City and the Trafford Centre and excellent well respected schools and parks within walking distance.

In brief this spacious accommodation briefly comprising:- entrance hall, front reception room open to the rear dining room. Modern fitted kitchen. To the first floor there are two double bedrooms and a third bedroom. Modern white family bathroom.

Externally: Small gated frontage and an enclosed paved Courtyard to the rear with gated access.

Perfect first time purchase!!

Entrance Hall

Staircase leading to the first floor. Radiator.

Lounge

Double glazed window to front elevation. Open fireplace. TV Point. Radiator. Wood flooring.

Dining Room

Double glazed window to rear elevation. Open fireplace. Radiator. Wood flooring.

Kitchen

Lovely modern white kitchen fitted with a range of wall and base units with contrasting worktops with tiled splashback incorporating a single drainer sink unit with mixer tap. Integrated electric hob with chimney style extractor fan above and oven below. Plumbed for washing machine. Space for free standing fridge freezer. Wall mounted boiler. Wall extractor. Double glazed window to side and door to the rear.

Landing

Access to all first floor rooms.

Bedroom One

Two double glazed windows to front elevation. Radiator.

Bedroom Two

Double glazed window to rear elevation. Radiator.

Bedroom Three

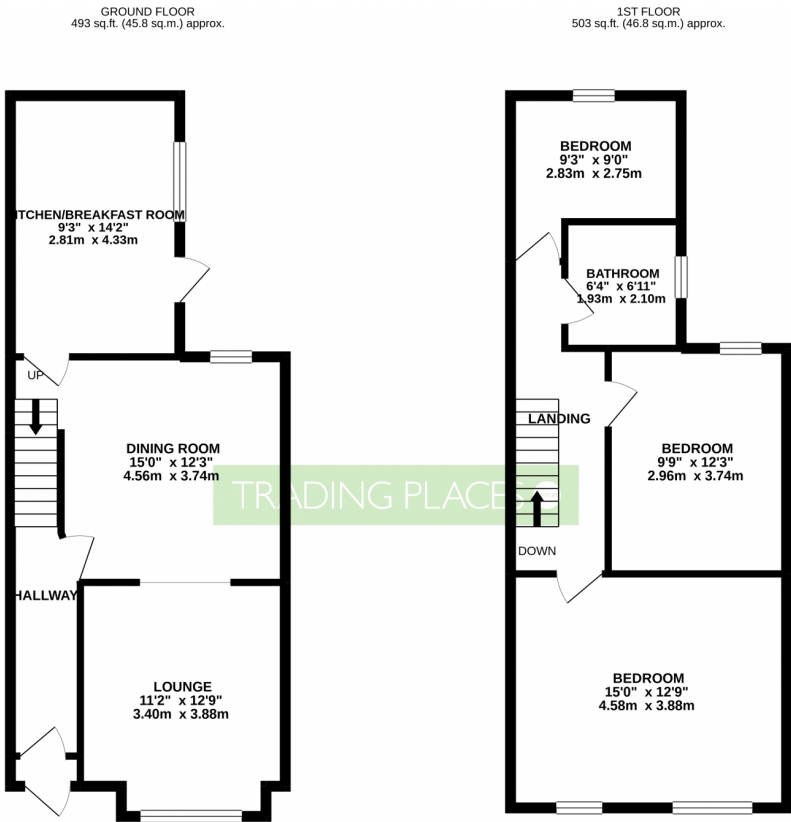
Double glazed window to rear elevation Radiator.

Family Bathroom

Double glazed frosted window. White bathroom suite comprising:- Panel bath with shower over, pedestal wash hand basin and WC. Laminate flooring. Part tiled to compliment.

Externally

Small garden frontage and an enclosed paved Courtyard with gated access.



TOTAL FLOOR AREA : 997 sq.ft. (92.6 sq.m.) approx.

Whilst every attempt has been made to ensure the accuracy of the floorplan contained here, measurements of doors, windows, rooms and any other items are approximate and no responsibility is taken for any error, omission or mis-statement. This plan is for illustrative purposes only and should be used as such by any prospective purchaser. The services, systems and appliances shown have not been tested and no guarantee as to their operability or efficiency can be given.
Made with Metropix ©2021

Energy Efficiency

A B C D E F G

EPC

Coming soon

