



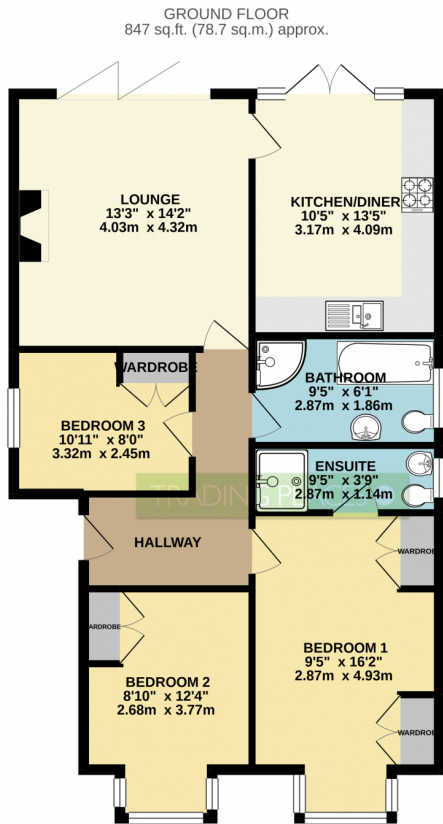
 **3**
Bedrooms

 **2**
Bathrooms





An exceptional newly built THREE BEDROOM DETACHED TRUE BUNGALOW occupying a good size plot. This stunning bungalow was designed and built by the current vendors and has been finished and presented to show home standards. The location allows easy access into Standish and for commuters the M6 Motorway is a short distance away. The accommodation briefly comprises: Reception hall, Lounge with feature fireplace, Karndean flooring and bi-folding doors out to the rear garden, Dining kitchen with integrated appliances. There are three double bedrooms all with fitted wardrobes, the master having an en-suite shower room, family bathroom. To the outside the property occupies a generous plot with gardens to the front, driveway parking and to the rear has a large paved patio and artificial grass for low maintenance. 10 years NHBC guarantee certificate. Early viewings are essential for the purchaser looking for a detached bungalow ready to enjoy with no further expense.



TOTAL FLOOR AREA : 847 sq.ft. (78.7 sq.m.) approx.
Whilst every attempt has been made to ensure the accuracy of the floorplan contained here, measurements of doors, windows, rooms and any other items are approximate and no responsibility is taken for any error, omission or mis-statement. This plan is for illustrative purposes only and should be used as such by any prospective purchaser. The services, systems and appliances shown have not been tested and no guarantee as to their operability or efficiency can be given.
Made with Metropix ©2023

EPC
Coming soon

