



 **3**
Bedrooms

 **1**
Bathroom





SOLD WITH NO CHAIN

LOVELY WELL PRESENTED THREE BEDROOM SEMI DETACHED WITH NEWLY INSTALLED BATHROOM SITUATED ON THE EVER POPULAR CASTLETON AVENUE IN STRETFORD

In brief the property briefly comprising: - Light and airy entrance hall, large through lounge with bay fronted window and patio doors opening to the rear. Spacious Kitchen/Diner. To the first floor there are two double bedrooms with fitted wardrobes and a third single bedroom. Modern white bathroom suite with shower.

Externally: - A paved driveway to the front leading to the detached garage and lawned front garden. To the rear is an attractive well-kept garden mainly laid to lawn with shrub borders and separate patio area.

Location: The property is set in a great location for all local amenities, transport links and within walking distance to good local schools and parks.

EARLY VIEWING ESSENTIAL!!! CALL US NOW ON .0161 865 9220 TO BOOK YOUR SLOT!!

Entrance Hallway

Hardwood door with glass panes opening to a light and airy hallway. Radiator. Staircase leading to the first floor.

Through Lounge

Double glazed bay window to front elevation with feature brick fireplace and gas fire. Ceiling coving and picture rail. Radiator. Double glazed sliding patio doors opening to the rear.

Kitchen/. Diner

Double glazed window to the rear and side elevation. Fitted with a range of wall and base units with contrasting worktops, incorporating a modern sink with mixer tap, four ring gas hob with extractor fan above and oven below. Plumbed for washing machine and space for under counter fridge freezer. Open to dining area. Door to side.

Landing

Double glazed frosted window to side elevation Access to all first floor rooms.

Bedroom One

Double glazed bay window to front elevation. Fitted wardrobes. Radiator.

Bedroom Two

Double glazed window to rear elevation. Fitted wardrobes. Radiator.

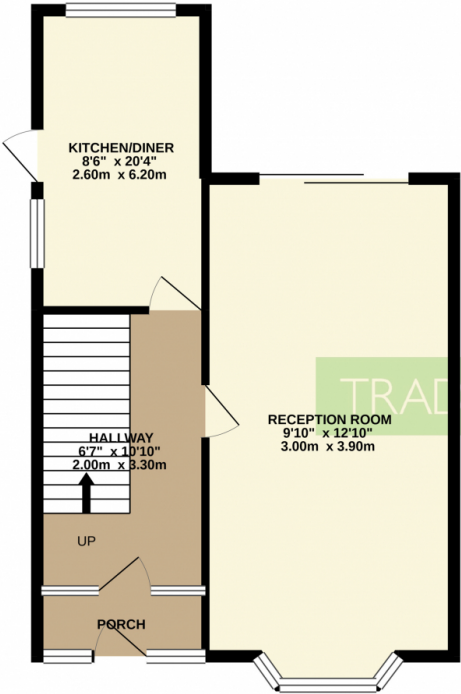
Bedroom Three

Double glazed window to front elevation. Radiator.

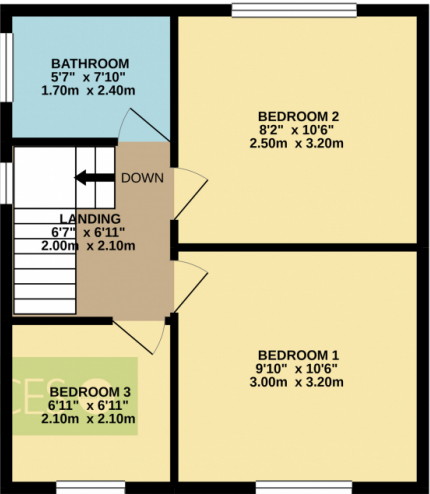
Bathroom

New installed modern white bathroom suite comprising: - Panel bath with shower over, vanity wash hand basin with low level WC. Double glazed frosted window, Tiled to compliment.

GROUND FLOOR
525 sq.ft. (48.8 sq.m.) approx.



1ST FLOOR
453 sq.ft. (42.1 sq.m.) approx.



TOTAL FLOOR AREA : 978 sq.ft. (90.9 sq.m.) approx.

Whilst every attempt has been made to ensure the accuracy of the floorplan contained here, measurements of doors, windows, rooms and any other items are approximate and no responsibility is taken for any error, omission or mis-statement. This plan is for illustrative purposes only and should be used as such by any prospective purchaser. The services, systems and appliances shown have not been tested and no guarantee as to their operability or efficiency can be given.
Made with Metropix ©2021

