

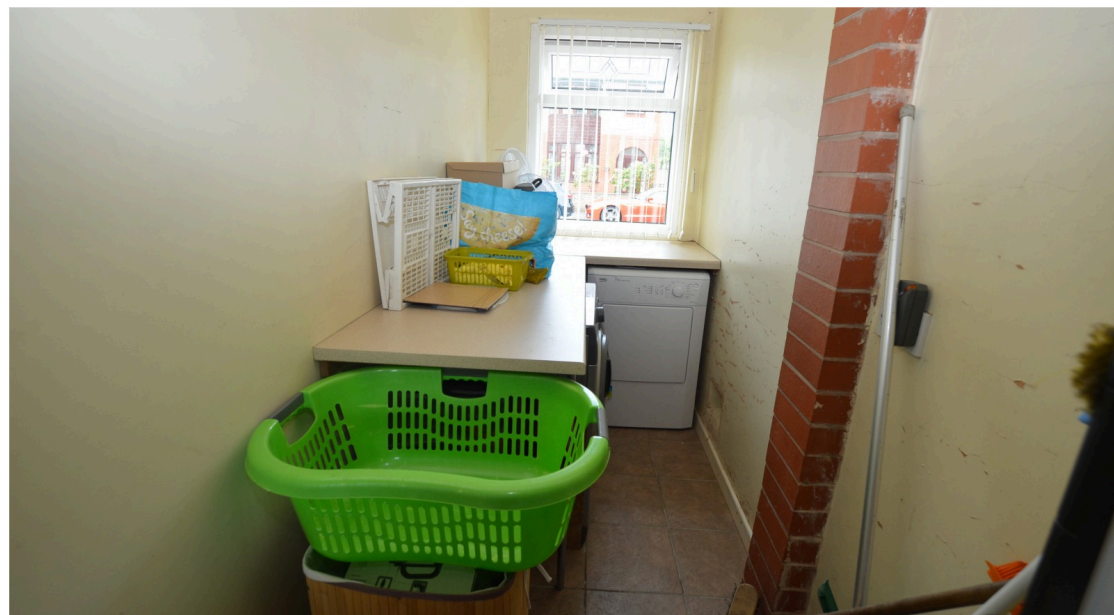


 3

Bedrooms

 2

Bathrooms





Lovely Three bedroom semi-detached which is well presented throughout and situated in a sought-after area of Stretford offering easy access to all local amenities and within walking distance to Stretford shopping Mall with a new food hall with an array of cafes and bars. Stretford Metrolink is easily accessible for the City Centre, Media City and Altrincham. Good local primary and junior schools nearby and Victoria Park is just around the corner.

This spacious accommodation briefly comprising: - Entrance Hall, two reception rooms and sliding doors opening to the Conservatory. There is a fitted kitchen and a separate utility room. The property has the added benefit of a ground floor WC. To the first floor there are three bedrooms and a family bathroom with separate walk-in shower.

Externally: - Driveway to front with off road parking and an enclosed garden to the rear.

Entrance Hall

Staircase leading to the first floor. Radiator.

Reception One

Double glazed window to front elevation. Curved radiator.

Reception Two

TV Point. Gas fire. Double glazed sliding doors opening to the Conservatory. Radiator.

Conservatory.

Double glazed with side doors leading to the rear garden.

Kitchen

Fitted with a range of wall and base units with contrasting worktops incorporating a single drainer sink unit with mixer tap. Gas cooker point. Plumbed for dishwasher and space for fridge freezer. Breakfast bar. Double glazed window to rear and door to the side.

Utility Room

Fitted with base unit and plumbed for washing machine. Door to rear porch.

Ground floor WC

Fitted with a WC.

Landing

Access to all first-floor rooms.

Bedroom One

Double glazed bay window to front elevation. Fitted wardrobes. Curved radiator.

Bedroom Two

Double glazed window to rear elevation. Fitted wardrobes Radiator.

Bedroom Three

Double glazed window to front elevation. Fitted wardrobes. Radiator.

Bathroom

Double glazed frosted window. White bathroom suite comprising: - separate walk-in shower, white panel bath, pedestal wash hand basin and WC. Heated towel Rail. Tiled to compliment.

