

TRADING PLACES ●

Offers over £140,000
2 New Belvedere Close, M32



2

Bedrooms



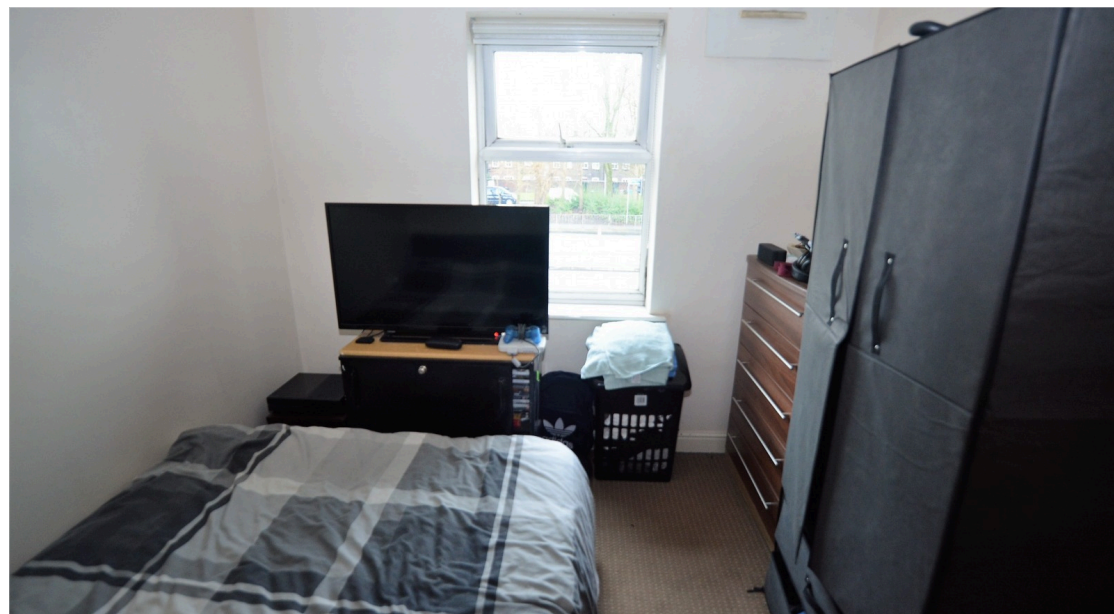
1

Bathroom

133, Barton Road, Stretford, Manchester, M32 8DN |
admin@tradingplaces.co.uk

01618659220





TWO DOUBLE BEDROOM apartment great for any first time buyers or landlords alike! Just minutes from the METRO, Stretford Mall and the BRIDGWATER CANAL, the location couldn't be better, situated just off Chester Road, Stretford, nearby transport links to Manchester City Centre and local motorway network connections to Manchester Airport.

SECURE BIKE STORE on site and the apartment is safely located on the first floor of this block. ALLOCATED PARKING plus ample visitor spaces make this a very comprehensive package.

Briefly comprising of an entrance hall, open plan lounge-diner-kitchen with fitted wall and base units. A three piece family bathroom is in place. Externally, the grounds offer communal gardens and parking suitable for residents and visitors.

Entrance Hall - Large L-shaped entrance Hall. Door to deep storage cupboard, lounge and two bedrooms. Entryphone system. Electric heater. Laminate flooring.

Open Plan Living Room - Window to front. Electric heater. Kitchen area with wall and base units, sink with mixer tap, intergrated elecric oven and hob.

Bedroom One - Window to front. Electric heater.

Bedroom Two - Window to front. Electric heater.

Bathroom - Heated towel rail. Panelled bath with wall mounted shower unit over. WC. Wash basin. Vinyl flooring.

Outside - Garden area for communal use

Secure bike store

Allocated parking space

