

TRADING PLACES ●

Offers over £185,000
Stretford Road, Urmston, M41



2

Bedrooms



2

Bathrooms

42 Flixton Road , Urmston, Manchester, M41 5AB |
mark@tradingplacesurmston.co.uk

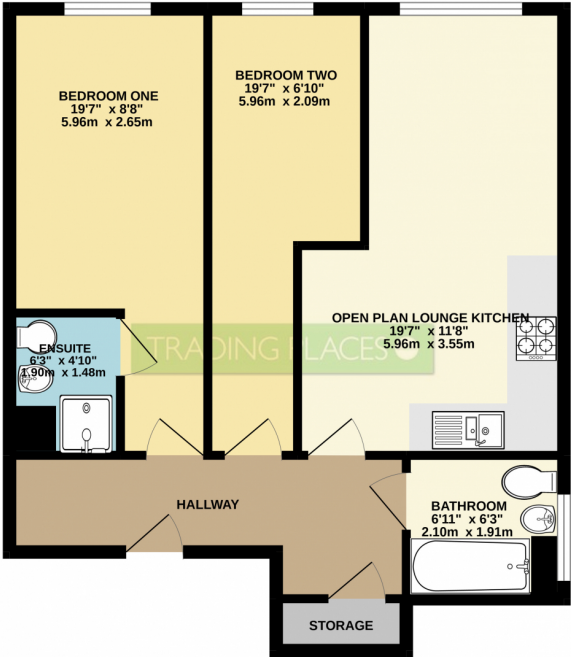
01617470022





SUPERBLY PRESENTED & MUST BE VIEWED!!!! TRADING PLACES are delighted to offer for sale this stunning two bedroom second floor modern apartment. In genuine 'move in condition' & must be viewed to be appreciated. In brief the accommodation comprises of a welcoming hallway, open plan lounge & kitchen, two well-proportioned bedrooms, storage cupboard, en-suite shower room off the master & a contemporary three piece bathroom suite. This top floor apartment also comes with loft space for additional storage. The property is warmed by gas central heating & is uPVC double glazed. Our clients have taken every care to bring you the property in move in condition & the quality is evident throughout. Externally to there are well maintained communal gardens & designated parking spaces along with visitor spaces. Ideally placed for both Stretford & Urmston.

GROUND FLOOR
610 sq.ft. (56.6 sq.m.) approx.



TOTAL FLOOR AREA: 610 sq.ft. (56.6 sq.m.) approx.
Whilst every attempt has been made to ensure the accuracy of the floorplan contained here, measurements of doors, windows, rooms and any other items are approximate and no responsibility is taken for any error, omission or misstatement. This plan is for illustrative purposes only and should be used as such by any prospective purchaser. The services, systems and appliances shown have not been tested and no guarantee as to their operability or efficiency can be given.
Made with Metropix i2022

The image shows the Energy Performance Certificate (EPC) logo, which consists of a house icon with a vertical bar representing energy efficiency levels from A (green) to G (red). To the right of the logo, the text 'EPC' is written in large, bold, red letters. Below this, the text 'Coming soon' is written in large, bold, black letters. A red progress bar is shown at the bottom of the logo, indicating the current energy efficiency level.

