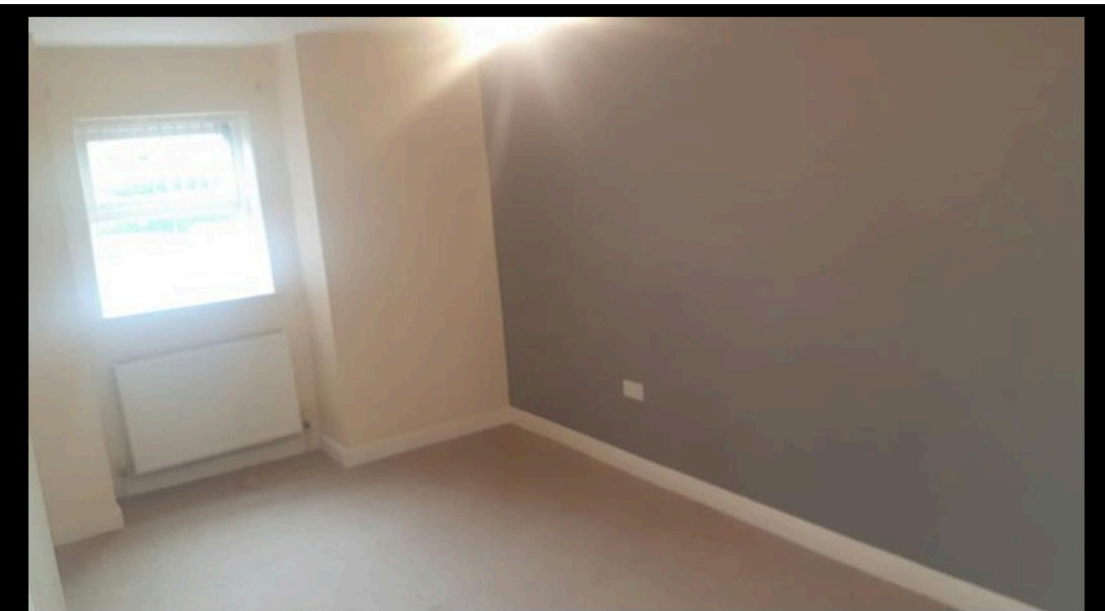




 **2**
Bedrooms

 **1**
Bathroom



A well presented two bedroom ground floor apartment situated on the outskirts of Batley and in a development of similar properties. Two good size bedrooms, lounge and attractive modern kitchen with integral equipment fitted. Modern Bathroom with white three piece suite. Great for a first time buyer or investor looking to expand their portfolio.

If you are a first time buyer looking for a great base on the outskirts of Batley or a landlord looking to expand their portfolio of properties then Allder Mews is well worth considering.

The two bed apartment is situated on the outskirts of Batley in a sought after location close to local amenities, transport links and schools. Internally comprising; Open plan lounge/kitchen area, two bedrooms and bathroom. Externally the property has communal grounds and parking. It has UPVC windows and doors throughout along with gas central heating. Guaranteed parking space available. An internal viewing is essential in order to appreciate the possibilities it gives.

The apartment consists of the following

Lounge

With UPVC window and central heating radiator this light bright room. It has laminate flooring and views over the rear garden via patio doors and a Juliette balcony

Kitchen

This attractive kitchen has a good range of light wood units to wall and floor along with contrasting work surfaces. It has laminate flooring and integral cooker, hob and extractor fan plus fridge freezer. There is space for a washing machine

Bedroom 1

Light bright room with UPVC window and Gas Central Heating Radiator

Bedroom 2

Light bright room with UPVC window and gas central heating radiator

