



 4
Bedrooms

 2
Bathrooms



TO BE SOLD WITH NO ONWARD CHAIN IS THIS TRULY STUNNING FOUR BEDROOM DETACHED HOME LOCATED ON SELBY ROAD IN GARFORTH. IMMACULATE THROUGHOUT. CALL TUDOR SALES & LETTINGS TODAY FOR MORE INFORMATION OR TO ARRANGE A VIEWING.

Brought to the market for sale is this truly stunning four bedroom detached home located on Selby Road in Garforth. To be sold with no-ward chain, this immaculate property offers a wealth of high quality fixtures and fittings throughout and comprises in brief: ground floor: entrance hallway, living area with a bespoke fitted kitchen, wc/cloaks and a lounge. First floor: master bedroom with en-suite, three further bedrooms and a house bathroom. Benefits from double glazing and gas central heating. Externally, there is a gated and secure driveway. To the rear is a detached garage and low maintenance garden with decking area, artificial turf and a putting green, making this the perfect outdoor space for entertaining family and friends. Selby Road is within close proximity of the National Motorway Network and Garforth Train Station, ideal for those who daily commute. Call Tudor Sales & Lettings today for more information or to arrange a viewing.

Lounge *4.06 x 4.10*

Feature wood burning stove to chimney breast recess with timber floating mantel. PVCu double glazed bay window to the front. Central heating radiator. Television point. Coving and ceiling rose.

Dining Kitchen *6.10 x 3.10*

Fitted with a wide range of contemporary wall and units. Corian work surfaces and breakfast bar. Inset twin bowl sink and mixer tap, and Hot Tap. Five ring Induction hob, electric oven with integrated microwave oven. Other integrated appliances include fridge freezer, dishwasher and washing machine and mobile charging point. PVCu double glazed bi fold doors lead out to the rear garden area. Vertical central heating radiator. Tiled flooring. Down lights to ceiling. Remote controlled blinds.

En - Suite *1.94 x 1.22*

Corian panelled double shower cubicle with electric shower. Wash basin with Corian splash back and double cupboard below. Low flush WC. Heated towel radiator. Tiled floor. Extractor. Shaver point.

Bedroom 2 *4.14 x 3.30*

Decorative cast iron fireplace. PVCu double glazed window to the front and side. Central heating radiator. Television point. to the front.

Bedroom 3 *3.14 x 2.19*

PVCu double glazed window. Central heating radiator.

Bedroom 4 *2.83 x 1.88*

PVCu double glazed window. Central heating radiator.

Bathroom

A stunning four piece white suite comprising of: - corian panelled shower cubicle, free standing roll top bath, vanity wash basin with double cupboard below, low flush WC. Tiled to walls and floor. PVCu double glazed window. Heated towel radiator. Down lights to ceiling. Extractor.

Master Bedroom *5.24 x 3.10*

PVCu double glazed tilt and open french doors to Juliette balcony. Vertical central heating radiator. Recessed double wardrobes. Television point. Door to en suite shower room.

Family Area *4.09 x 2.86*

PVCu double glazed window. Two vertical central heating radiators. Tiled flooring. Television point.

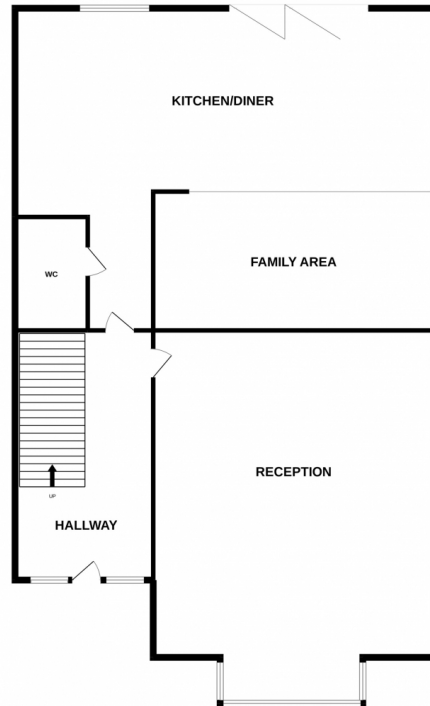
Wc

Two piece white suite comprising low flush WC, vanity wash basin with cupboard below. Tiled floor. PVCu double glazed window. folding door to storage cupboard.

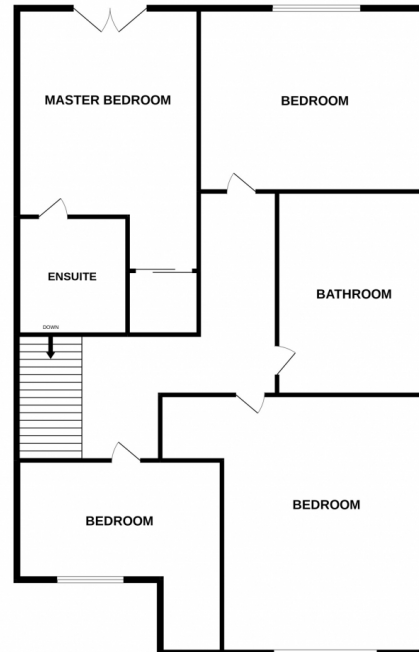
Entrance Hall

A most welcoming entrance hall with composite entrance door. Vertical central heating radiator. Staircase to first floor. Tiled flooring.

GROUND FLOOR



1ST FLOOR



Whilst every attempt has been made to ensure the accuracy of the floorplan contained here, measurements of doors, windows, rooms and any other items are approximate and no responsibility is taken for any error, omission or mis-statement. This plan is for illustrative purposes only and should be used as such by any prospective purchaser. The services, systems and appliances shown have not been tested and no guarantee as to their operability or efficiency can be given.
Made with Metropix ©2022

