



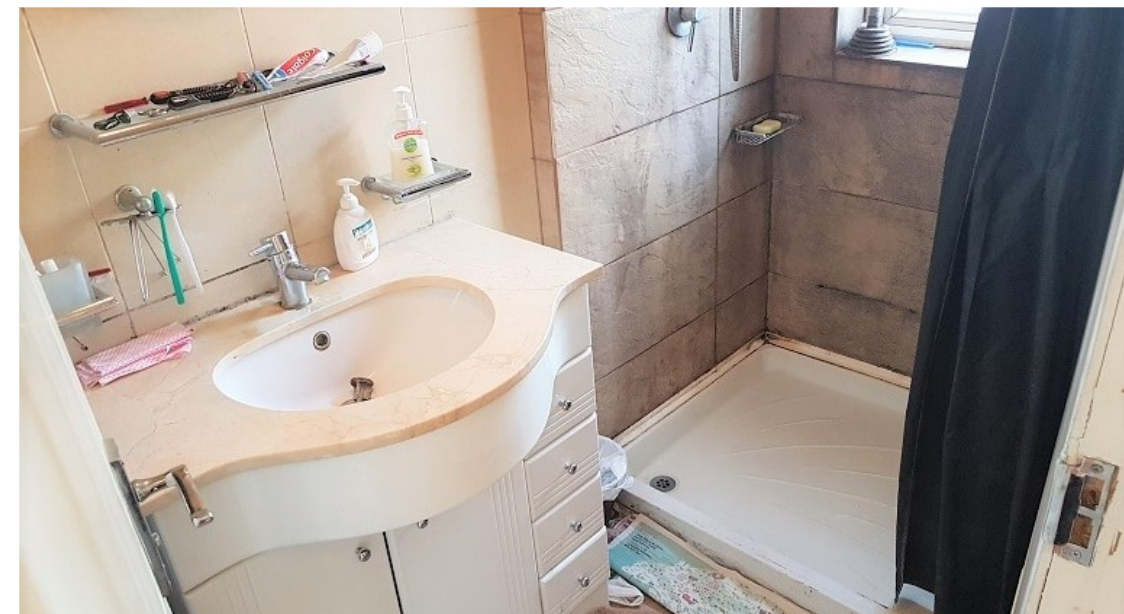
3

Bedrooms



1

Bathroom



We are pleased to offer for sale this 3 bedroom end of terrace house located on a quiet cul-de-sac in Kingsbury. The property benefits from a large thru-lounge, fitted kitchen, 2 large double bedrooms with fitted wardrobes, a good sized 3rd bedroom, tiled shower room and separate toilet. With a large rear garden and off street parking for 2 vehicles at the front this is a perfect family home.

Entrance Hall 4.1m x 1.7m (13' 5" x 5' 7")

Glazed door in to entrance hall, doors to all ground floor rooms, access to understairs storage cupboard, stairs to first floor landing

Reception/Rear Reception 7.2m x 3.3m (23' 7" x 10' 10")

Bay window to front, opening to rear reception, patio doors to rear garden

Kitchen 2.1m x 2.1m (6' 11" x 6' 11")

Range of base and wall units, laminate work tops, door to rear garden, space for cooker, space for fridge/freezer,

First Floor Landing

Doors to all rooms, access to loft

Bedroom 1 4.6m x 3.4m (15' 1" x 11' 2")

Bay window to front, fitted wardrobes

Bedroom 2 3.3m x 3.1m (10' 10" x 10' 2")

Window to rear, fitted wardrobes

Bedroom 3 2.1m x 2.1m (6' 11" x 6' 11")

Window to front,

Shower room 2.2m x 1.2m (7' 3" x 3' 11")

Fully tiled walls and floor, window to rear, shower unit, single hand basin

Separate WC 1.3m x 0.7m (4' 3" x 2' 4")

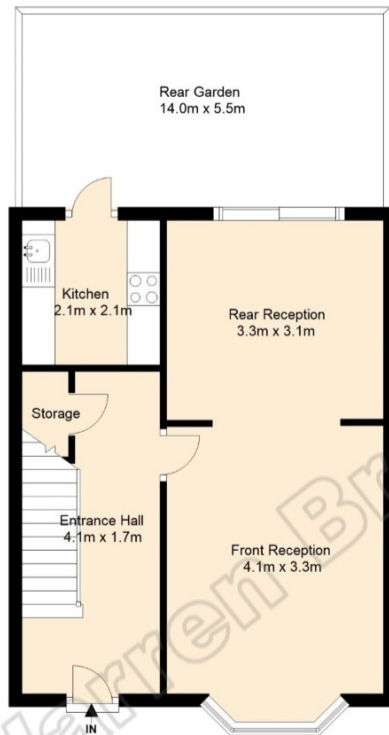
Window to rear, low flush WC

Rear Garden 14m x 5.5m (45' 11" x 18' 1")

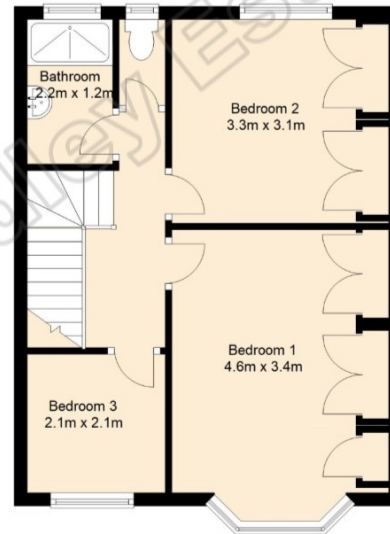
Fully paved, access to storage shed, side gate, access to rear access road

Freehold

Ground Floor
Approx 39.9 Sq. Metres (429.0 Sq Feet)



First Floor
Approx 39.8 Sq. Metres (428.8 Sq. Feet)



Total Area: Approx 79.7 Sq.Metres (857.8 Sq.Feet)



Coming soon

