



THE  
LIBERTY  
BUILDING  
LONDON E14  
FLOORPLANS





# THE LIBERTY BUILDING LIME HARBOUR LONDON E14

CANARY WHARF LIFESTYLE • LUXURY APARTMENTS & A PENTHOUSE  
CONCIERGE SERVICE • PRIVATE RESIDENTS' GYMNASIUM

*Welcome to a sensational collection of one,  
two & three bedroom apartments & a penthouse that  
are styled to the last exquisite design detail.*





The Shard

Tower Bridge

The City

The River Thames

Canary Wharf

Crossharbour DLR station



*Living near the banks of The River Thames, this historic setting will give you a strong sense of connection with the modern capital and all it has to offer.*



*As you approach the south of The Liberty Building, you'll encounter the striking sight of a landscaped piazza, complete with fountain jets, semi-mature trees and – at night – illuminated paving to welcome you home. As you enter the building, you'll find a concierge who's there to look after you and your neighbours, around the clock.*



Computer generated image of The Liberty Building from the south-facing piazza.





THE  
LIBERTY  
BUILDING  
KNOXVILLE

Contemporary design. Elegant interiors. Soothing use of space and light. You'll come to appreciate the subtle touches that make living at The Liberty Building a discerning way to live.

Your private entrance and reception area has been created to offer you a refreshing welcome and to impress your guests. With its marble lined floors and luxurious shared spaces, you'll meet new friends who appreciate successful living.

# ELEGANCE IS THE HALLMARK OF A TELFORD HOMES APARTMENT

Computer generated image of concierge and reception area at The Liberty Building.





Computer generated image of interior style at The Liberty Building (furnishings not included).



# SUPERBLY EQUIPPED FOR HEALTH & FITNESS



On the ground floor, you can make use of The Liberty Building's fully appointed private residents' gymnasium. Whether you want to drop in for an early morning workout or share a session with your private trainer, you'll find all the machines and equipment you need.

Computer generated image of the private residents' gymnasium at The Liberty Building.



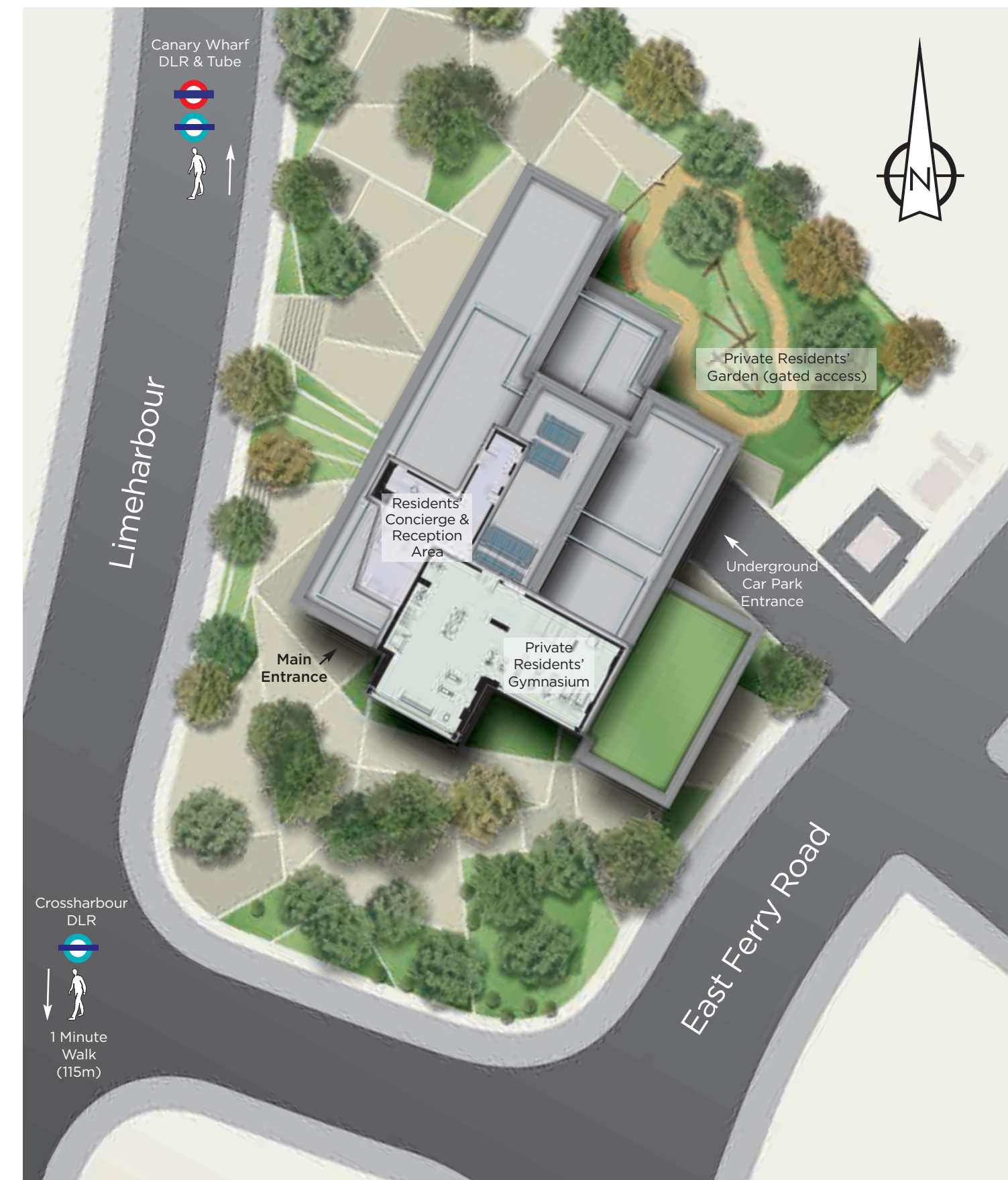
# AT LIBERTY TO EXPRESS YOUR LIFESTYLE



Computer generated image of typical interior style at The Liberty Building with approximate view of Canary Wharf beyond (from Apartment 2201).



# LOCAL AREA & DEVELOPMENT LAYOUT





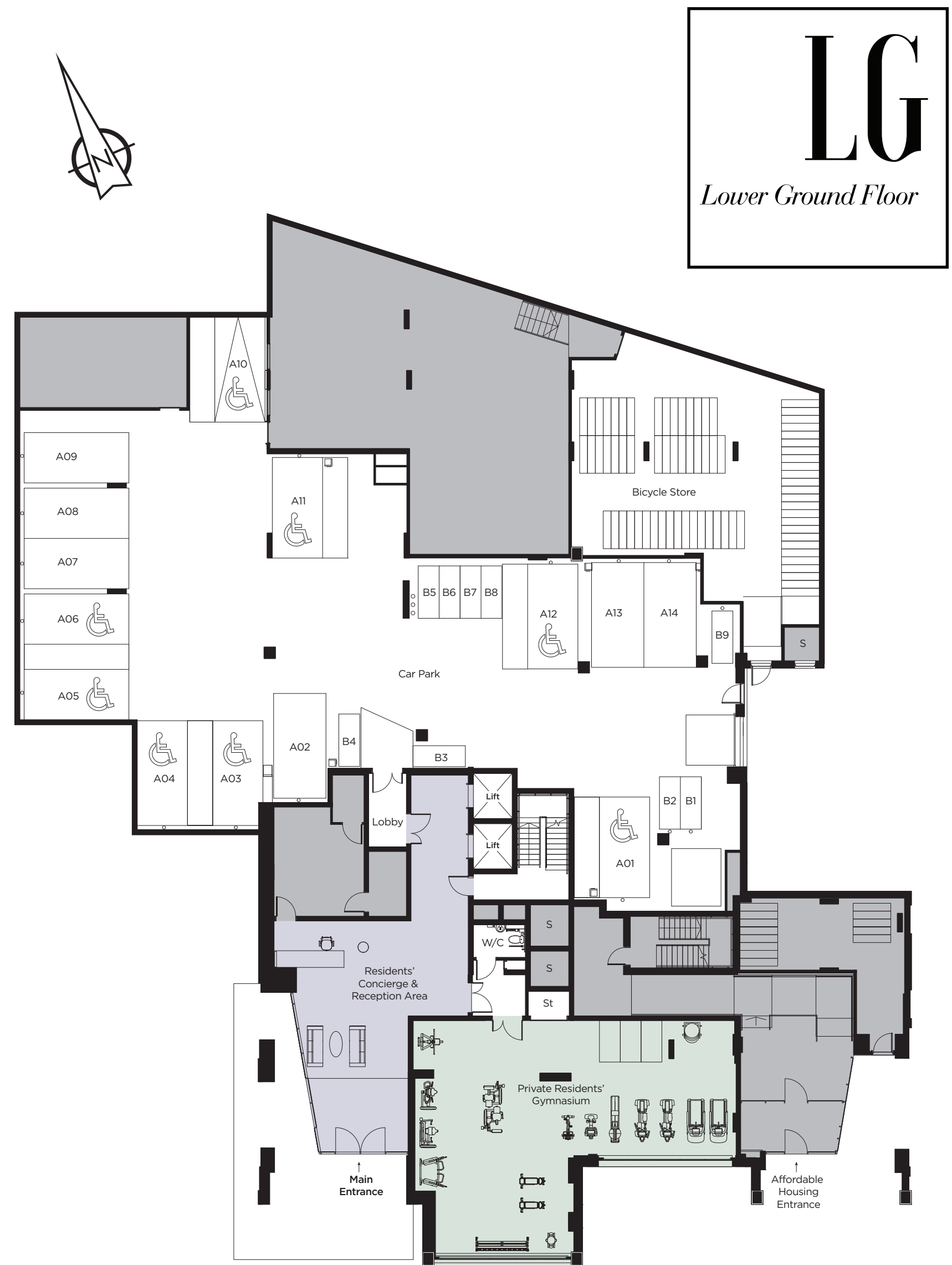


Floors 24 – 25  
The Penthouse

Floors 7 – 23  
Residential  
Apartments

Main Entrance

Computer generated image of The Liberty Building from Limeharbour, E14.



Development layout not to scale, for indication only.



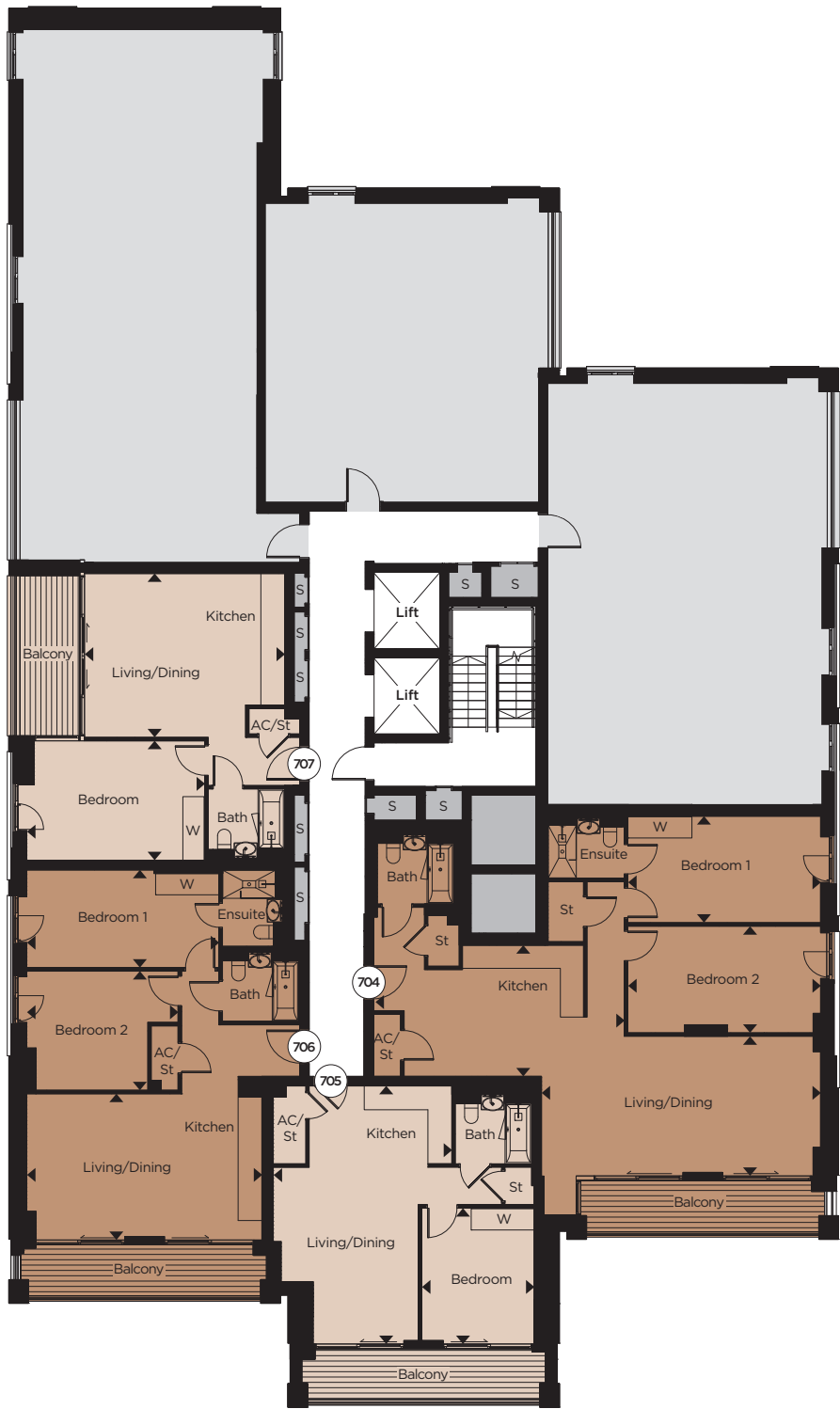
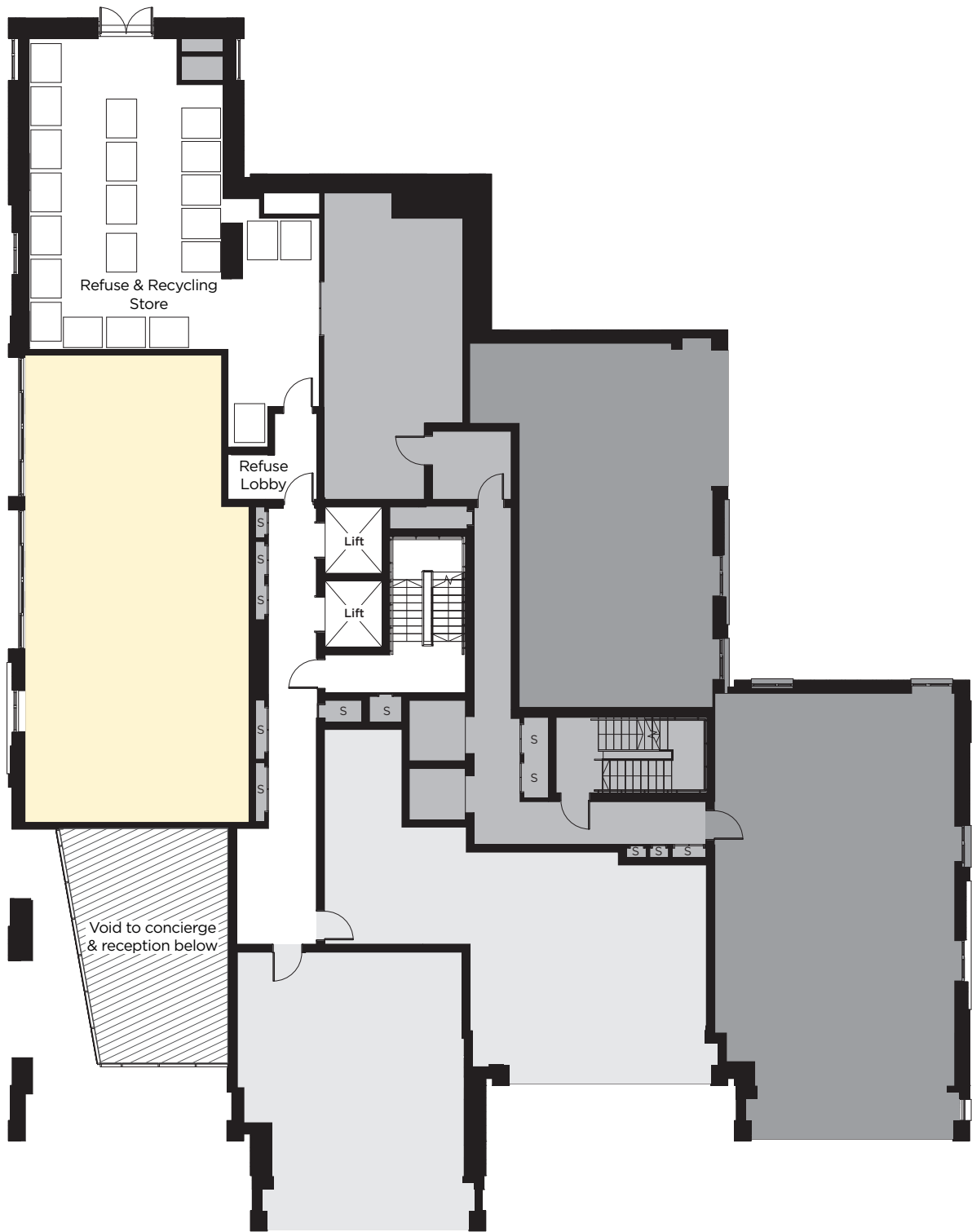
G

Ground Floor



07

Seventh Floor



704

Kitchen	6.19m x 3.69m	20'4" x 12'1"
Living/Dining	7.84m x 3.92m	25'7" x 12'10"
Bedroom 1	5.42m x 3.00m	17'9" x 9'10"
Bedroom 2	5.42m x 3.00m	17'9" x 9'10"

Total Area  
103.3 sq m 1,112 sq ft

705

Kitchen/Living/Dining	7.26m x 5.02m	23'10" x 16'6"
Bedroom	3.82m x 3.16m	12'6" x 10'4"

Total Area  
50.0 sq m 539 sq ft

706

Kitchen/Living/Dining	6.62m x 4.11m	21'9" x 13'6"
Bedroom 1	5.41m x 2.75m	17'9" x 9'0"
Bedroom 2	4.26m x 3.35m	14'0" x 11'0"

Total Area  
73.4 sq m 790 sq ft

707

Kitchen/Living/Dining	5.63m x 4.61m	18'6" x 15'1"
Bedroom	5.01m x 3.36m	16'5" x 11'0"

Total Area  
51.6 sq m 555 sq ft

View towards  
The City &  
Millwall  
Inner Dock

View towards  
The River Thames

View towards  
Mudchute Park  
& Greenwich

- 1 bedroom apartment
- 2 bedroom apartment
- 3 bedroom apartment
- Affordable Housing
- Commercial Unit
- Shared-Ownership

The dimensions given are accurate to within plus or minus two inches (50mm) from floor level and include wardrobe spaces where applicable. ◆► Indicates where measurements have been taken from. They are not intended to be used for carpet sizes, appliance space or items or furniture. Views shown are indicative and are for orientation purposes. The information is for general guidance only. S = Services



08

Eighth Floor

802

Kitchen/Living/Dining	
8.37m x 5.53m	27'6" x 18'2"
Bedroom	
5.96m x 2.75m	19'7" x 9'0"
Total Area	
57.8 sq m	622 sq ft

803

Kitchen/Living/Dining	
7.88m x 6.34m	25'10" x 20'10"
Bedroom 1	
5.42m x 3.24m	17'9" x 10'8"
Bedroom 2	
4.27m x 3.73m	14'0" x 12'3"
Total Area	
83.4 sq m	897 sq ft

804

Kitchen	
7.92m x 5.57m	26'0" x 18'3"
Living/Dining	
7.86m x 3.84m	25'9" x 12'7"
Bedroom 1	
7.70m x 3.00m	25'3" x 9'10"
Bedroom 2	
4.56m x 3.08m	15'0" x 10'1"
Total Area	
112.2 sq m	1,208 sq ft

805

Kitchen/Living/Dining	
7.26m x 5.02m	23'10" x 16'6"
Bedroom	
3.82m x 3.16m	12'6" x 10'4"
Total Area	
50.0 sq m	539 sq ft

806

Kitchen/Living/Dining	
6.62m x 4.11m	21'9" x 13'6"
Bedroom 1	
5.41m x 2.75m	17'9" x 9'0"
Bedroom 2	
4.26m x 3.35m	14'0" x 11'0"
Total Area	
73.4 sq m	790 sq ft

807

Kitchen/Living/Dining	
5.63m x 4.61m	18'6" x 15'1"
Bedroom	
5.01m x 3.36m	16'5" x 11'0"
Total Area	
51.6 sq m	555 sq ft

View towards  
Canary Wharf

View towards  
The City &  
Millwall  
Inner Dock

View towards  
Mudchute Park  
& Greenwich

View towards  
The River Thames  
& The O<sub>2</sub>

View towards  
The River Thames



View towards  
Canary Wharf

View towards  
The City &  
Millwall  
Inner Dock

View towards  
The River Thames  
& The O<sub>2</sub>

View towards  
The River Thames

View towards  
Mudchute Park  
& Greenwich

09

Ninth Floor

901

Kitchen/Living/Dining	
6.60m x 6.27m	21'8" x 20'7"
Bedroom 1	
3.78m x 3.11m	12'5" x 10'2"
Bedroom 2	
4.87m x 2.75m	16'0" x 9'0"
Bedroom 3	
3.25m x 2.75m	10'8" x 9'0"
Total Area	
90.5 sq m	974 sq ft

902

Kitchen/Living/Dining	
8.37m x 5.53m	27'6" x 18'2"
Bedroom	
5.96m x 2.75m	19'7" x 9'0"
Total Area	
57.8 sq m	622 sq ft

903

Kitchen/Living/Dining	
7.88m x 6.34m	25'10" x 20'10"
Bedroom 1	
5.42m x 3.24m	17'9" x 10'8"
Bedroom 2	
4.27m x 3.73m	14'0" x 12'3"
Total Area	
83.4 sq m	897 sq ft

904

Kitchen	
7.92m x 5.57m	26'0" x 18'3"
Living/Dining	
7.86m x 3.84m	25'9" x 12'7"
Bedroom 1	
7.70m x 3.00m	25'3" x 9'10"
Bedroom 2	
4.56m x 3.08m	15'0" x 10'1"
Total Area	
112.2 sq m	1,208 sq ft

905

Kitchen/Living/Dining	
7.26m x 5.02m	23'10" x 16'6"
Bedroom	
3.82m x 3.16m	12'6" x 10'4"
Total Area	
50.0 sq m	539 sq ft

906

Kitchen/Living/Dining	
6.62m x 4.11m	21'9" x 13'6"
Bedroom 1	
5.41m x 2.75m	17'9" x 9'0"
Bedroom 2	
4.26m x 3.35m	14'0" x 11'0"
Total Area	
73.4 sq m	790 sq ft

907

Kitchen/Living/Dining	
5.63m x 4.61m	18'6" x 15'1"
Bedroom	
5.01m x 3.36m	16'5" x 11'0"
Total Area	
51.6 sq m	555 sq ft

Shared-Ownership 1 bedroom apartment 2 bedroom apartment 3 bedroom apartment

The dimensions given are accurate to within plus or minus two inches (50mm) from floor level and include wardrobe spaces where applicable. Indicates where measurements have been taken from. They are not intended to be used for carpet sizes, appliance space or items or furniture. Views shown are indicative and are for orientation purposes. The information is for general guidance only. = Services



10

Tenth Floor

1001

Kitchen/Living/Dining		
6.60m x 6.27m	21'8" x 20'7"	
Bedroom 1		
3.78m x 3.11m	12'5" x 10'2"	
Bedroom 2		
4.87m x 2.75m	16'0" x 9'0"	
Bedroom 3		
3.25m x 2.75m	10'8" x 9'0"	
Total Area		
90.4 sq m	974 sq ft	

1002

Kitchen/Living/Dining		
8.37m x 5.53m	27'6" x 18'2"	
Bedroom		
5.96m x 2.75m	19'7" x 9'0"	
Total Area		
57.8 sq m	622 sq ft	

1003

Kitchen/Living/Dining		
7.88m x 6.34m	25'10" x 20'10"	
Bedroom 1		
5.42m x 3.24m	17'9" x 10'8"	
Bedroom 2		
4.27m x 3.73m	14'0" x 12'3"	
Total Area		
83.4 sq m	897 sq ft	

1004

Kitchen		
7.92m x 5.57m	26'0" x 18'3"	
Living/Dining		
7.86m x 3.84m	25'9" x 12'7"	
Bedroom 1		
7.70m x 3.00m	25'3" x 9'10"	
Bedroom 2		
4.56m x 3.08m	15'0" x 10'1"	
Total Area		
112.2 sq m	1,208 sq ft	

1005

Kitchen/Living/Dining		
7.26m x 5.02m	23'10" x 16'6"	
Bedroom		
3.82m x 3.16m	12'6" x 10'4"	
Total Area		
50.0 sq m	539 sq ft	

1006

Kitchen/Living/Dining		
6.62m x 4.11m	21'9" x 13'6"	
Bedroom 1		
5.41m x 2.75m	17'9" x 9'0"	
Bedroom 2		
4.26m x 3.35m	14'0" x 11'0"	
Total Area		
73.4 sq m	790 sq ft	

1007

Kitchen/Living/Dining		
5.63m x 4.61m	18'6" x 15'1"	
Bedroom		
5.01m x 3.36m	16'5" x 11'0"	
Total Area		
51.6 sq m	555 sq ft	

1 bedroom apartment

2 bedroom apartment

3 bedroom apartment

View towards  
Canary Wharf

View towards  
The City &  
Millwall  
Inner Dock

View towards  
Mudchute Park  
& Greenwich

View towards  
The River Thames  
& The O<sub>2</sub>

View towards  
The River Thames

View towards  
Canary Wharf

View towards  
The City &  
Millwall  
Inner Dock

View towards  
Mudchute Park  
& Greenwich

View towards  
The River Thames  
& The O<sub>2</sub>

Eleventh Floor

1101

Kitchen/Living/Dining		
6.60m x 6.27m	21'8" x 20'7"	
Bedroom 1		
3.78m x 3.11m	12'5" x 10'2"	
Bedroom 2		
4.87m x 2.75m	16'0" x 9'0"	
Bedroom 3		
3.25m x 2.75m	10'8" x 9'0"	
Total Area		
90.4 sq m	974 sq ft	

1102

Kitchen/Living/Dining		
8.37m x 5.53m	27'6" x 18'2"	
Bedroom		
5.96m x 2.75m	19'7" x 9'0"	
Total Area		
57.8 sq m	622 sq ft	

1103

Kitchen/Living/Dining		
7.88m x 6.34m	25'10" x 20'10"	
Bedroom 1		
5.42m x 3.24m	17'9" x 10'8"	
Bedroom 2		
4.27m x 3.73m	14'0" x 12'3"	
Total Area		
83.4 sq m	897 sq ft	

1104

Kitchen		
7.92m x 5.57m	26'0" x 18'3"	
Living/Dining		
7.86m x 3.84m	25'9" x 12'7"	
Bedroom 1		
7.70m x 3.00m	25'3" x 9'10"	
Bedroom 2		
4.56m x 3.08m	15'0" x 10'1"	
Total Area		
112.2 sq m	1,208 sq ft	

1105

Kitchen/Living/Dining		
7.26m x 5.02m	23'10" x 16'6"	
Bedroom		
3.82m x 3.16m	12'6" x 10'4"	
Total Area		
50.0 sq m	539 sq ft	

1106

Kitchen/Living/Dining		
6.62m x 4.11m	21'9" x 13'6"	
Bedroom 1		
5.41m x 2.75m	17'9" x 9'0"	
Bedroom 2		
4.26m x 3.35m	14'0" x 11'0"	
Total Area		
73.4 sq m	790 sq ft	

1107

Kitchen/Living/Dining		
5.63m x 4.61m	18'6" x 15'1"	
Bedroom		
5.01m x 3.36m	16'5" x 11'0"	
Total Area		
51.6 sq m	555 sq ft	



# 12

## Twelfth Floor

### 1201

Kitchen/Living/Dining		
6.60m x 6.27m	21'8" x 20'7"	
Bedroom 1		
3.78m x 3.11m	12'5" x 10'2"	
Bedroom 2		
4.87m x 2.75m	16'0" x 9'0"	
Bedroom 3		
3.25m x 2.75m	10'8" x 9'0"	
Total Area		
90.4 sq m	974 sq ft	

### 1202

Kitchen/Living/Dining		
8.37m x 5.53m	27'6" x 18'2"	
Bedroom		
5.96m x 2.75m	19'7" x 9'0"	
Total Area		
57.8 sq m	622 sq ft	

### 1203

Kitchen/Living/Dining		
7.88m x 6.34m	25'10" x 20'10"	
Bedroom 1		
5.42m x 3.24m	17'9" x 10'8"	
Bedroom 2		
4.27m x 3.73m	14'0" x 12'3"	
Total Area		
83.4 sq m	897 sq ft	

### 1204

Kitchen		
7.92m x 5.57m	26'0" x 18'3"	
Living/Dining		
7.86m x 3.84m	25'9" x 12'7"	
Bedroom 1		
7.70m x 3.00m	25'3" x 9'10"	
Bedroom 2		
4.56m x 3.08m	15'0" x 10'1"	
Total Area		
112.2 sq m	1,208 sq ft	

### 1205

Kitchen/Living/Dining		
7.26m x 5.02m	23'10" x 16'6"	
Bedroom		
3.82m x 3.16m	12'6" x 10'4"	
Total Area		
50.0 sq m	539 sq ft	

### 1206

Kitchen/Living/Dining		
6.62m x 4.11m	21'9" x 13'6"	
Bedroom 1		
5.41m x 2.75m	17'9" x 9'0"	
Bedroom 2		
4.26m x 3.35m	14'0" x 11'0"	
Total Area		
73.4 sq m	790 sq ft	

### 1207

Kitchen/Living/Dining		
5.63m x 4.61m	18'6" x 15'1"	
Bedroom		
5.01m x 3.36m	16'5" x 11'0"	
Total Area		
51.6 sq m	555 sq ft	

1 bedroom apartment 2 bedroom apartment 3 bedroom apartment



# 13

## Thirteenth Floor

### 1301

Kitchen/Living/Dining		
6.60m x 6.27m	21'8" x 20'7"	
Bedroom 1		
3.78m x 3.11m	12'5" x 10'2"	
Bedroom 2		
4.87m x 2.75m	16'0" x 9'0"	
Bedroom 3		
3.25m x 2.75m	10'8" x 9'0"	
Total Area		
90.4 sq m	974 sq ft	

### 1302

Kitchen/Living/Dining		
8.37m x 5.53m	27'6" x 18'2"	
Bedroom		
5.96m x 2.75m	19'7" x 9'0"	
Total Area		
57.8 sq m	622 sq ft	

### 1303

Kitchen/Living/Dining		
7.88m x 6.34m	25'10" x 20'10"	
Bedroom 1		
5.42m x 3.24m	17'9" x 10'8"	
Bedroom 2		
4.27m x 3.73m	14'0" x 12'3"	
Total Area		
83.4 sq m	897 sq ft	

### 1304

Kitchen		
7.92m x 5.57m	26'0" x 18'3"	
Living/Dining		
7.86m x 3.84m	25'9" x 12'7"	
Bedroom 1		
7.70m x 3.00m	25'3" x 9'10"	
Bedroom 2		
4.56m x 3.08m	15'0" x 10'1"	
Total Area		
112.2 sq m	1,208 sq ft	

### 1305

Kitchen/Living/Dining		
7.26m x 5.02m	23'10" x 16'6"	
Bedroom		
3.82m x 3.16m	12'6" x 10'4"	
Total Area		
50.0 sq m	539 sq ft	

### 1306

Kitchen/Living/Dining		
6.62m x 4.11m	21'9" x 13'6"	
Bedroom 1		
5.41m x 2.75m	17'9" x 9'0"	
Bedroom 2		
4.26m x 3.35m	14'0" x 11'0"	
Total Area		
73.4 sq m	790 sq ft	

### 1307

Kitchen/Living/Dining		
5.63m x 4.61m	18'6" x 15'1"	
Bedroom		
5.01m x 3.36m	16'5" x 11'0"	
Total Area		
51.6 sq m	555 sq ft	



14

Fourteenth Floor

1401

Kitchen/Living/Dining		
6.60m x 6.27m	21'8" x 20'7"	
Bedroom 1		
3.78m x 3.11m	12'5" x 10'2"	
Bedroom 2		
4.87m x 2.75m	16'0" x 9'0"	
Bedroom 3		
3.25m x 2.75m	10'8" x 9'0"	
Total Area		
90.4 sq m	974 sq ft	

1402

Kitchen/Living/Dining		
8.37m x 5.53m	27'6" x 18'2"	
Bedroom		
5.96m x 2.75m	19'7" x 9'0"	
Total Area		
57.8 sq m	622 sq ft	

1403

Kitchen/Living/Dining		
7.88m x 6.34m	25'10" x 20'10"	
Bedroom 1		
5.42m x 3.24m	17'9" x 10'8"	
Bedroom 2		
4.27m x 3.73m	14'0" x 12'3"	
Total Area		
83.4 sq m	897 sq ft	

1404

Kitchen		
7.92m x 5.57m	26'0" x 18'3"	
Living/Dining		
7.86m x 3.84m	25'9" x 12'7"	
Bedroom 1		
7.70m x 3.00m	25'3" x 9'10"	
Bedroom 2		
4.56m x 3.08m	15'0" x 10'1"	
Total Area		
112.2 sq m	1,208 sq ft	

1405




Kitchen/Living/Dining		
7.26m x 5.02m	23'10" x 16'6"	
Bedroom		
3.82m x 3.16m	12'6" x 10'4"	
Total Area		
50.0 sq m	539 sq ft	

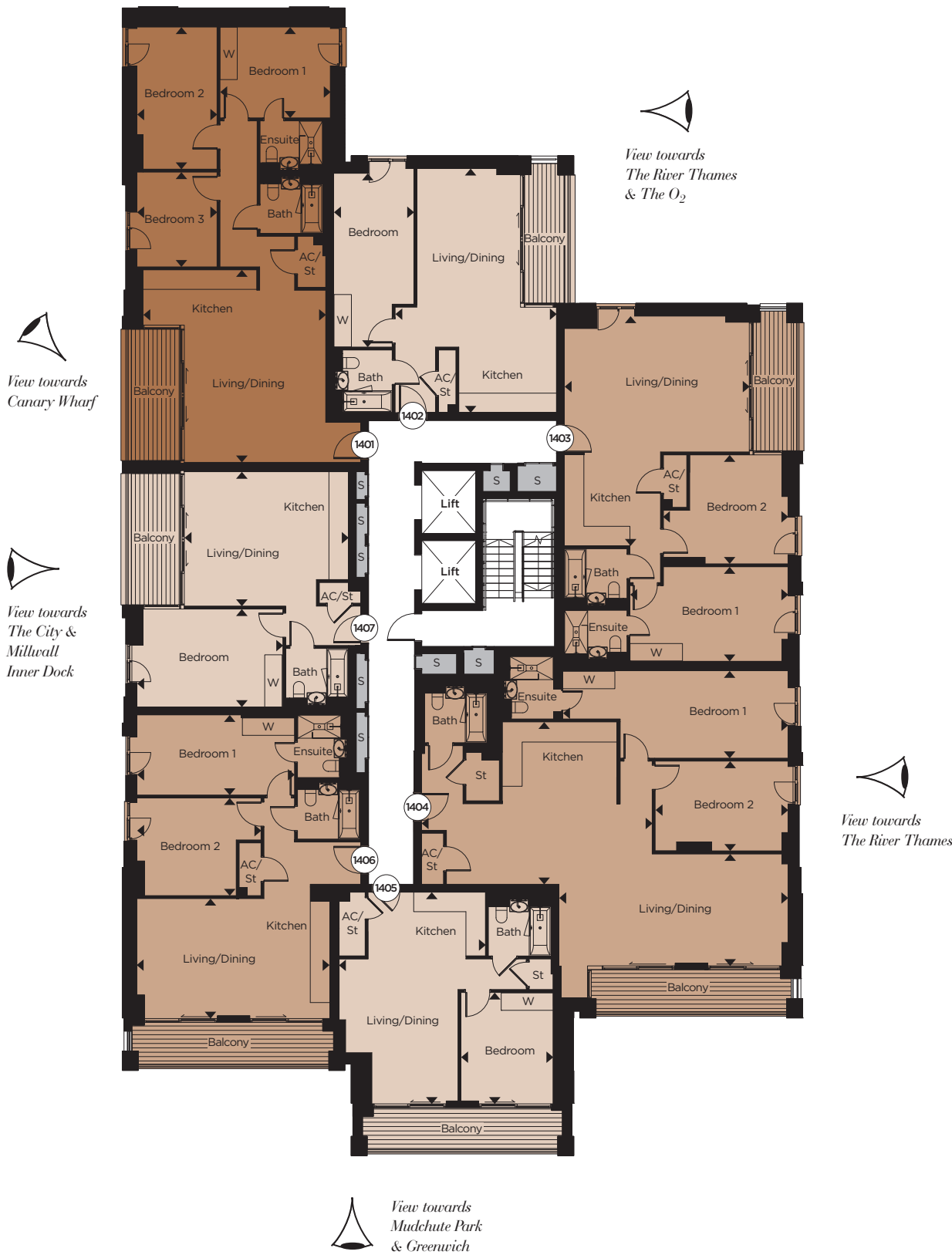
1406

Kitchen/Living/Dining		
6.62m x 4.11m	21'9" x 13'6"	
Bedroom 1		
5.41m x 2.75m	17'9" x 9'0"	
Bedroom 2		
4.26m x 3.35m	14'0" x 11'0"	
Total Area		
73.4 sq m	790 sq ft	

1407

Kitchen/Living/Dining		
5.63m x 4.61m	18'6" x 15'1"	
Bedroom		
5.01m x 3.36m	16'5" x 11'0"	
Total Area		
51.6 sq m	555 sq ft	

 1 bedroom apartment  2 bedroom apartment  3 bedroom apartment



15

Fifteenth Floor

1501

Kitchen/Living/Dining		
6.60m x 6.27m	21'8" x 20'7"	
Bedroom 1		
3.78m x 3.11m	12'5" x 10'2"	
Bedroom 2		
4.87m x 2.75m	16'0" x 9'0"	
Bedroom 3		
3.25m x 2.75m	10'8" x 9'0"	
Total Area		
90.4 sq m	974 sq ft	

1502

Kitchen/Living/Dining		
8.37m x 5.53m	27'6" x 18'2"	
Bedroom		
5.96m x 2.75m	19'7" x 9'0"	
Total Area		
57.8 sq m	622 sq ft	

1503

Kitchen/Living/Dining		
7.88m x 6.34m	25'10" x 20'10"	
Bedroom 1		
5.42m x 3.24m	17'9" x 10'8"	
Bedroom 2		
4.27m x 3.73m	14'0" x 12'3"	
Total Area		
83.4 sq m	897 sq ft	

1504

Kitchen		
7.92m x 5.57m	26'0" x 18'3"	
Living/Dining		
7.86m x 3.84m	25'9" x 12'7"	
Bedroom 1		
7.70m x 3.00m	25'3" x 9'10"	
Bedroom 2		
4.56m x 3.08m	15'0" x 10'1"	
Total Area		
112.2 sq m	1,208 sq ft	

1505

Kitchen/Living/Dining		
7.26m x 5.02m	23'10" x 16'6"	
Bedroom		
3.82m x 3.16m	12'6" x 10'4"	
Total Area		
50.0 sq m	539 sq ft	

1506

Kitchen/Living/Dining		
6.62m x 4.11m	21'9" x 13'6"	
Bedroom 1		
5.41m x 2.75m	17'9" x 9'0"	
Bedroom 2		
4.26m x 3.35m	14'0" x 11'0"	
Total Area		
73.4 sq m	790 sq ft	

1507

Kitchen/Living/Dining		
5.63m x 4.61m	18'6" x 15'1"	
Bedroom		
5.01m x 3.36m	16'5" x 11'0"	
Total Area		
51.6 sq m	555 sq ft	



16

Sixteenth Floor

1601

Kitchen/Living/Dining		
6.60m x 6.27m	21'8" x 20'7"	
Bedroom 1		
3.78m x 3.11m	12'5" x 10'2"	
Bedroom 2		
4.87m x 2.75m	16'0" x 9'0"	
Bedroom 3		
3.25m x 2.75m	10'8" x 9'0"	
Total Area		
90.4 sq m	974 sq ft	

1602

Kitchen/Living/Dining		
8.37m x 5.53m	27'6" x 18'2"	
Bedroom		
5.96m x 2.75m	19'7" x 9'0"	
Total Area		
57.8 sq m	622 sq ft	

1603

Kitchen/Living/Dining		
7.88m x 6.34m	25'10" x 20'10"	
Bedroom 1		
5.42m x 3.24m	17'9" x 10'8"	
Bedroom 2		
4.27m x 3.73m	14'0" x 12'3"	
Total Area		
83.4 sq m	897 sq ft	

1604

Kitchen		
7.92m x 5.57m	26'0" x 18'3"	
Living/Dining		
7.86m x 3.84m	25'9" x 12'7"	
Bedroom 1		
7.70m x 3.00m	25'3" x 9'10"	
Bedroom 2		
4.56m x 3.08m	15'0" x 10'1"	
Total Area		
112.2 sq m	1,208 sq ft	

1605

Kitchen/Living/Dining		
7.26m x 5.02m	23'10" x 16'6"	
Bedroom		
3.82m x 3.16m	12'6" x 10'4"	
Total Area		
50.0 sq m	539 sq ft	

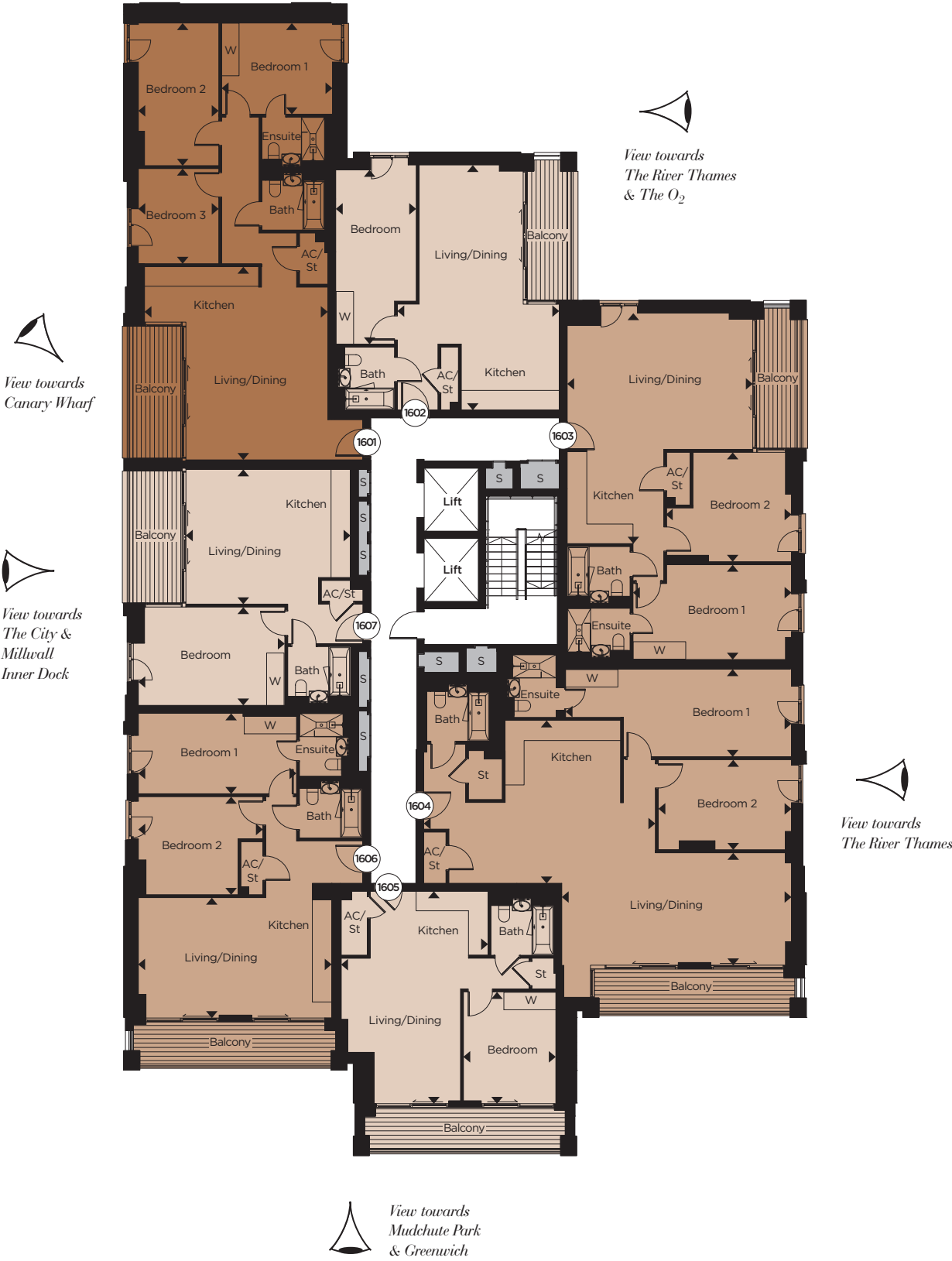
1606

Kitchen/Living/Dining		
6.62m x 4.11m	21'9" x 13'6"	
Bedroom 1		
5.41m x 2.75m	17'9" x 9'0"	
Bedroom 2		
4.26m x 3.35m	14'0" x 11'0"	
Total Area		
73.4 sq m	790 sq ft	

1607

Kitchen/Living/Dining		
5.63m x 4.61m	18'6" x 15'1"	
Bedroom		
5.01m x 3.36m	16'5" x 11'0"	
Total Area		
51.6 sq m	555 sq ft	

 1 bedroom apartment  2 bedroom apartment  3 bedroom apartment



17

Seventeenth Floor

1701

Kitchen/Living/Dining		
6.60m x 6.27m	21'8" x 20'7"	
Bedroom 1		
3.78m x 3.11m	12'5" x 10'2"	
Bedroom 2		
4.87m x 2.75m	16'0" x 9'0"	
Bedroom 3		
3.25m x 2.75m	10'8" x 9'0"	
Total Area		
90.4 sq m	974 sq ft	

1702

Kitchen/Living/Dining		
8.37m x 5.53m	27'6" x 18'2"	
Bedroom		
5.96m x 2.75m	19'7" x 9'0"	
Total Area		
57.8 sq m	622 sq ft	

1703

Kitchen/Living/Dining		
7.88m x 6.34m	25'10" x 20'10"	
Bedroom 1		
5.42m x 3.24m	17'9" x 10'8"	
Bedroom 2		
4.27m x 3.73m	14'0" x 12'3"	
Total Area		
83.4 sq m	897 sq ft	

1704

Kitchen		
7.92m x 5.57m	26'0" x 18'3"	
Living/Dining		
7.86m x 3.84m	25'9" x 12'7"	
Bedroom 1		
7.70m x 3.00m	25'3" x 9'10"	
Bedroom 2		
4.56m x 3.08m	15'0" x 10'1"	
Total Area		
112.2 sq m	1,208 sq ft	

1705

Kitchen/Living/Dining		
7.26m x 5.02m	23'10" x 16'6"	
Bedroom		
3.82m x 3.16m	12'6" x 10'4"	
Total Area		
50.0 sq m	539 sq ft	

1706

Kitchen/Living/Dining		
6.62m x 4.11m	21'9" x 13'6"	
Bedroom 1		
5.41m x 2.75m	17'9" x 9'0"	
Bedroom 2		
4.26m x 3.35m	14'0" x 11'0"	
Total Area		
73.4 sq m	790 sq ft	

1707

Kitchen/Living/Dining		
5.63m x 4.61m	18'6" x 15'1"	
Bedroom		
5.01m x 3.36m	16'5" x 11'0"	
Total Area		
51.6 sq m	555 sq ft	





18

Eighteenth Floor

1801

Kitchen/Living/Dining		
6.60m x 6.27m	21'8" x 20'7"	
Bedroom 1		
3.78m x 3.11m	12'5" x 10'2"	
Bedroom 2		
4.87m x 2.75m	16'0" x 9'0"	
Bedroom 3		
3.25m x 2.75m	10'8" x 9'0"	
Total Area		
90.4 sq m	974 sq ft	

1802

Kitchen/Living/Dining		
8.37m x 5.53m	27'6" x 18'2"	
Bedroom		
5.96m x 2.75m	19'7" x 9'0"	
Total Area		
57.8 sq m	622 sq ft	

1803

Kitchen/Living/Dining		
7.88m x 6.34m	25'10" x 20'10"	
Bedroom 1		
5.42m x 3.24m	17'9" x 10'8"	
Bedroom 2		
4.27m x 3.73m	14'0" x 12'3"	
Total Area		
83.4 sq m	897 sq ft	

1804

Kitchen		
7.92m x 5.57m	26'0" x 18'3"	
Living/Dining		
7.86m x 3.84m	25'9" x 12'7"	
Bedroom 1		
7.70m x 3.00m	25'3" x 9'10"	
Bedroom 2		
4.56m x 3.08m	15'0" x 10'1"	
Total Area		
112.2 sq m	1,208 sq ft	

1805

Kitchen/Living/Dining		
7.26m x 5.02m	23'10" x 16'6"	
Bedroom		
3.82m x 3.16m	12'6" x 10'4"	
Total Area		
50.0 sq m	539 sq ft	

1806

Kitchen/Living/Dining		
6.62m x 4.11m	21'9" x 13'6"	
Bedroom 1		
5.41m x 2.75m	17'9" x 9'0"	
Bedroom 2		
4.26m x 3.35m	14'0" x 11'0"	
Total Area		
73.4 sq m	790 sq ft	

1807

Kitchen/Living/Dining		
5.63m x 4.61m	18'6" x 15'1"	
Bedroom		
5.01m x 3.36m	16'5" x 11'0"	
Total Area		
51.6 sq m	555 sq ft	

 1 bedroom apartment

 2 bedroom apartment

 3 bedroom apartment



View towards  
Mudchute Park,  
Greenwich &  
The River Thames

19

Nineteenth Floor

1901

Kitchen/Living/Dining		
6.60m x 6.42m	21'8" x 21'1"	
Bedroom 1		
3.78m x 3.11m	12'5" x 10'2"	
Bedroom 2		
4.87m x 2.75m	16'0" x 9'0"	
Bedroom 3		
3.25m x 2.75m	10'8" x 9'0"	
Total Area		
91.7 sq m	987 sq ft	
Total Terrace Area		
25.2 sq m	272 sq ft	

1902

Kitchen/Living/Dining		
7.88m x 6.34m	25'10" x 20'10"	
Bedroom 1		
5.42m x 3.24m	17'9" x 10'8"	
Bedroom 2		
4.27m x 3.73m	14'0" x 12'3"	
Total Area		
81.1 sq m	873 sq ft	
Total Terrace Area		
25.2 sq m	272 sq ft	

1903

Kitchen		
7.92m x 5.57m	26'0" x 18'3"	
Living/Dining		
7.86m x 3.84m	25'9" x 12'7"	
Bedroom 1		
7.70m x 3.00m	25'3" x 9'10"	
Bedroom 2		
4.56m x 3.08m	15'0" x 10'1"	
Total Area		
112.2 sq m	1,208 sq ft	

1904

Kitchen/Living/Dining		
7.26m x 5.02m	23'10" x 16'6"	
Bedroom		
3.82m x 3.16m	12'6" x 10'4"	
Total Area		
50.0 sq m	539 sq ft	

1905

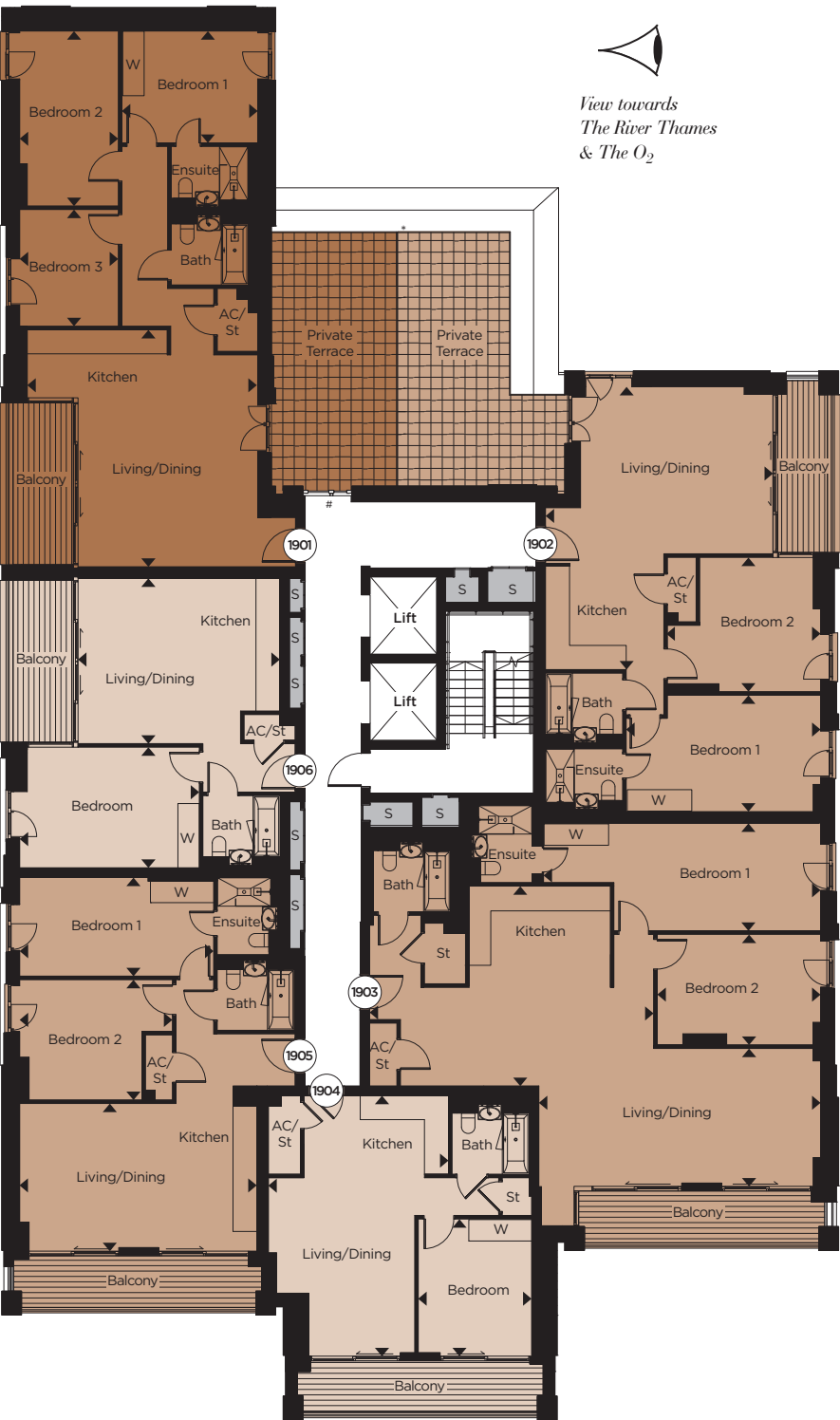
Kitchen/Living/Dining		
6.62m x 4.11m	21'9" x 13'6"	
Bedroom 1		
5.41m x 2.75m	17'9" x 9'0"	
Bedroom 2		
4.26m x 3.35m	14'0" x 11'0"	
Total Area		
73.4 sq m	790 sq ft	

1906

Kitchen/Living/Dining		
5.63m x 4.61m	18'6" x 15'1"	
Bedroom		
5.01m x 3.36m	16'5" x 11'0"	
Total Area		
51.6 sq m	555 sq ft	



View towards  
The River Thames  
& The O<sub>2</sub>



View towards  
Mudchute Park,  
Greenwich &  
The River Thames



20

Twentieth Floor

2001

Kitchen/Living/Dining		
6.60m x 6.42m	21'8" x 21'1"	
Bedroom 1		
3.78m x 3.11m	12'5" x 10'2"	
Bedroom 2		
4.87m x 2.75m	16'0" x 9'0"	
Bedroom 3		
3.25m x 2.75m	10'8" x 9'0"	
Total Area		
91.7 sq m	987 sq ft	

2002

Kitchen/Living/Dining		
7.88m x 6.34m	25'10" x 20'10"	
Bedroom 1		
5.42m x 3.24m	17'9" x 10'8"	
Bedroom 2		
4.27m x 3.74m	14'0" x 12'3"	
Total Area		
81.1 sq m	873 sq ft	

2003

Kitchen		
7.92m x 5.57m	26'0" x 18'3"	
Living/Dining		
7.86m x 3.84m	25'9" x 12'7"	
Bedroom 1		
7.70m x 3.00m	25'3" x 9'10"	
Bedroom 2		
4.56m x 3.08m	15'0" x 10'1"	
Total Area		
112.2 sq m	1,208 sq ft	

2004

Kitchen/Living/Dining		
7.26m x 5.02m	23'10" x 16'6"	
Bedroom		
3.82m x 3.16m	12'6" x 10'4"	
Total Area		
50.0 sq m	539 sq ft	

2005

Kitchen/Living/Dining		
6.62m x 4.11m	21'9" x 13'6"	
Bedroom 1		
5.41m x 2.75m	17'9" x 9'0"	
Bedroom 2		
4.26m x 3.35m	14'0" x 11'0"	
Total Area		
73.4 sq m	790 sq ft	

2006

Kitchen/Living/Dining		
5.63m x 4.61m	18'6" x 15'1"	
Bedroom		
5.01m x 3.36m	16'5" x 11'0"	
Total Area		
51.6 sq m	555 sq ft	



View towards  
The River Thames  
& The O<sub>2</sub>

View towards  
Canary Wharf &  
The River Thames

View towards  
The City,  
Millwall Inner Dock  
& The River Thames

View towards  
The River Thames

View towards  
Mudchute Park,  
Greenwich &  
The River Thames

1 bedroom apartment 2 bedroom apartment 3 bedroom apartment

21

Twenty-first Floor

2101

Kitchen/Living/Dining		
6.60m x 6.42m	21'8" x 21'1"	
Bedroom 1		
3.78m x 3.11m	12'5" x 10'2"	
Bedroom 2		
4.87m x 2.75m	16'0" x 9'0"	
Bedroom 3		
3.25m x 2.75m	10'8" x 9'0"	
Total Area		
104.2 sq m	1,121 sq ft	
Total Terrace Area		
53.8 sq m	579 sq ft	

2102

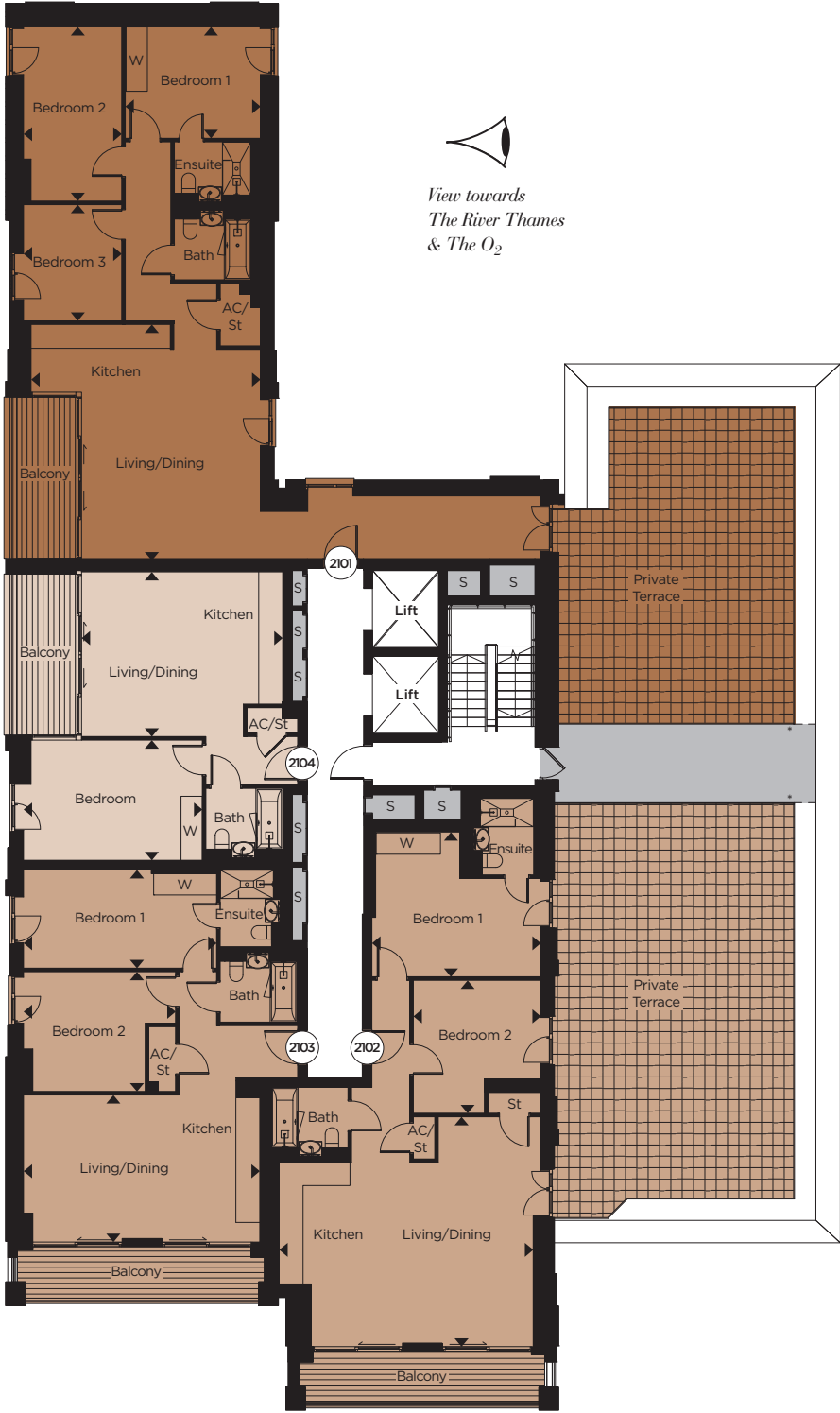
Kitchen/Living/Dining		
7.11m x 6.43m	23'4" x 21'1"	
Bedroom 1		
4.73m x 4.05m	15'6" x 13'3"	
Bedroom 2		
3.72m x 3.57m	12'2" x 11'9"	
Total Area		
85.5 sq m	921 sq ft	
Total Terrace Area		
74.2 sq m	798 sq ft	

2103

Kitchen/Living/Dining		
6.62m x 4.11m	21'9" x 13'6"	
Bedroom 1		
5.41m x 2.75m	17'9" x 9'0"	
Bedroom 2		
4.26m x 3.35m	14'0" x 11'0"	
Total Area		
73.4 sq m	790 sq ft	

2104

Kitchen/Living/Dining		
5.63m x 4.61m	18'6" x 15'1"	
Bedroom		
5.01m x 3.36m	16'5" x 11'0"	
Total Area		
51.6 sq m	555 sq ft	



View towards  
The River Thames  
& The O<sub>2</sub>

View towards  
The River Thames  
& The O<sub>2</sub>

View towards  
The City,  
Millwall Inner Dock  
& The River Thames

View towards  
The River Thames

View towards  
Mudchute Park,  
Greenwich &  
The River Thames



22

Twenty-second Floor

2201

Kitchen/Living/Dining		
6.55m x 6.42m	21'6" x 21'1"	
Bedroom 1		
3.78m x 3.11m	12'5" x 10'2"	
Bedroom 2		
4.87m x 2.75m	16'0" x 9'0"	
Bedroom 3		
3.25m x 2.75m	10'8" x 9'0"	
Total Area		
91.7 sq m	987 sq ft	

2202

Kitchen/Living/Dining		
7.11m x 6.43m	23'4" x 21'1"	
Bedroom 1		
4.73m x 4.05m	15'6" x 13'3"	
Bedroom 2		
3.72m x 3.56m	12'2" x 11'8"	
Total Area		
85.5 sq m	921 sq ft	

2203

Kitchen/Living/Dining		
6.62m x 4.11m	21'9" x 13'6"	
Bedroom 1		
5.41m x 2.75m	17'9" x 9'0"	
Bedroom 2		
4.26m x 3.35m	14'0" x 11'0"	
Total Area		
73.4 sq m	790 sq ft	

2204

Kitchen/Living/Dining		
5.63m x 4.61m	18'6" x 15'1"	
Bedroom		
5.01m x 3.36m	16'5" x 11'0"	
Total Area		
51.6 sq m	555 sq ft	



View towards  
Mudchute Park,  
Greenwich &  
The River Thames



23

Twenty-third Floor

2301

Kitchen/Living/Dining		
6.60m x 6.42m	21'8" x 21'1"	
Bedroom 1		
3.78m x 3.11m	12'5" x 10'2"	
Bedroom 2		
4.87m x 2.75m	16'0" x 9'0"	
Bedroom 3		
3.25m x 2.75m	10'8" x 9'0"	
Total Area		
91.7 sq m	987 sq ft	

2302

Kitchen/Living/Dining		
7.11m x 6.43m	23'4" x 21'1"	
Bedroom 1		
4.73m x 4.05m	15'6" x 13'3"	
Bedroom 2		
3.72m x 3.56m	12'2" x 11'8"	
Total Area		
85.5 sq m	921 sq ft	

2303

Kitchen/Living/Dining		
6.62m x 4.11m	21'9" x 13'6"	
Bedroom 1		
5.41m x 2.75m	17'9" x 9'0"	
Bedroom 2		
4.26m x 3.35m	14'0" x 11'0"	
Total Area		
73.4 sq m	790 sq ft	

2304

Kitchen/Living/Dining		
5.63m x 4.61m	18'6" x 15'1"	
Bedroom		
5.01m x 3.36m	16'5" x 11'0"	
Total Area		
51.6 sq m	555 sq ft	



View towards  
The River Thames  
& The O<sub>2</sub>

View towards  
Mudchute Park,  
Greenwich &  
The River Thames

1 bedroom apartment 2 bedroom apartment 3 bedroom apartment

The dimensions given are accurate to within plus or minus two inches (50mm) from floor level and include wardrobe spaces where applicable. Indicates where measurements have been taken from. They are not intended to be used for carpet sizes, appliance space or items or furniture. Views shown are indicative and are for orientation purposes. The information is for general guidance only. = Services



PH

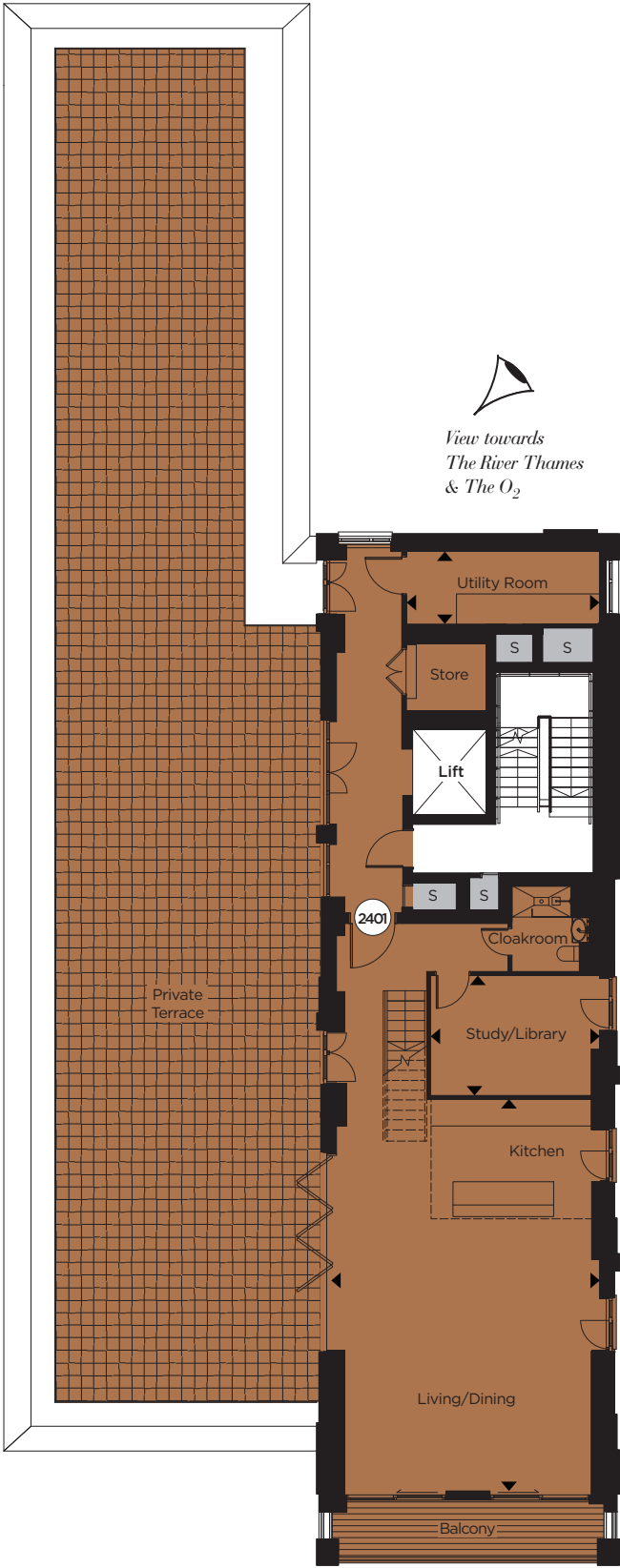
Twenty-fourth/  
Twenty-fifth Floor

The Penthouse

The Penthouse, Level 24

Kitchen/Living/Dining		
9.97m x 6.80m	32'9" x 22'4"	
Study/Library		
4.25m x 3.03m	13'11" x 9'11"	
Utility Room		
4.86m x 1.81m	15'11" x 5'11"	

View towards  
Canary Wharf &  
The River Thames



View towards  
The River Thames  
& The O<sub>2</sub>

View towards  
The River Thames

View towards  
The City,  
Millwall Inner Dock  
& The River Thames

View towards  
Mudchute Park,  
Greenwich &  
The River Thames



THE PENTHOUSE TERRACE VIEW



Actual view of Canary Wharf, The O<sub>2</sub> and The River Thames from The Penthouse private terrace.

The Penthouse

PH

Twenty-fourth/  
Twenty-fifth Floor

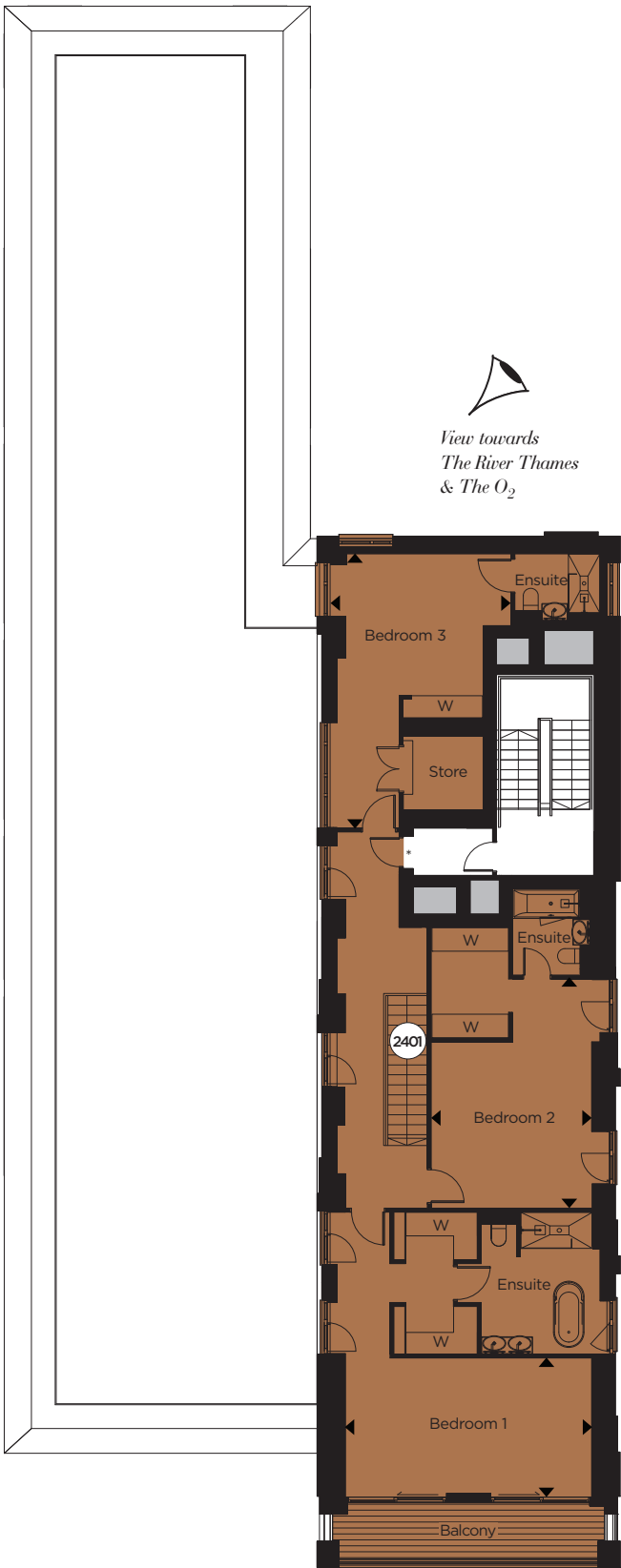
The Penthouse, Level 25

Bedroom 1		
6.23m x 3.55m	20'5" x 11'8"	
Bedroom 2		
5.81m x 4.05m	19'1" x 13'3"	
Bedroom 3		
6.92m x 4.62m	22'8" x 15'2"	

Total Penthouse Area  
247 sq m 2,658 sq ft

Total Terrace Area (24<sup>th</sup> Floor)  
199.6 sq m 2,148 sq ft

View towards  
Canary Wharf &  
The River Thames



View towards  
The River Thames  
& The O<sub>2</sub>

View towards  
The River Thames

View towards  
The City,  
Millwall Inner Dock  
& The River Thames

View towards  
Mudchute Park,  
Greenwich &  
The River Thames

3 bedroom apartment

The dimensions given are accurate to within plus or minus two inches (50mm) from floor level and include wardrobe spaces where applicable. ◀▶ Indicates where measurements have been taken from. They are not intended to be used for carpet sizes, appliance space or items or furniture. Views shown are indicative and are for orientation purposes. The information is for general guidance only. S = Services (\*Secondary access for means of escape)



# THE FINER

From a stylish kitchen with Siemens appliances and feature lighting to generous open plan living spaces, underfloor heating, your own private outdoor space, every detail of your exclusive apartment has been designed to offer you luxury and quality.



# DETAILS



## GENERAL FEATURES

- 24hr Concierge Service
- Private residents' gymnasium
- Under-floor heating
- Secured bicycle storage

## KITCHENS

- High specification handle-less fitted cabinets from London designer Urban Myth in high-gloss white
- Engineered stone worktops
- Fully integrated Siemens appliances: stainless steel oven, induction hob, microwave, dishwasher, fridge/freezer & washer/dryer
- Wall-mounted, integrated telescopic extractor hood
- Full height glass splash-backs
- Feature lighting above & under wall units

## FLOORING

- Kitchen, living room & hallway in premium quality engineered oak timber flooring
- Bedrooms carpeted in a warm, neutral colour tone

## BATH & ENSUITE SHOWER ROOMS

- Pure white Villeroy & Boch bathroom suites with chrome taps and mixers
- Bath with thermostatic shower mixer, rain shower and glazed screen (where applicable)
- Large walk-in shower enclosure to shower rooms & ensembles with rain shower
- Contemporary porcelain & glass tiling
- Large, backlit vanity mirror
- Heated towel rail
- Bespoke cabinetry with built in storage and low voltage socket
- LED mood lighting to basin & bath area

## DÉCOR

- Smooth finish to all walls & ceilings, painted in white emulsion
- White satinwood finish to doors and woodwork

## FIXTURES & FITTINGS

- Full height entrance & internal doors
- Wardrobes to main bedroom with sliding doors
- Satin chrome door handles
- Recessed downlights to kitchen, living room, bedrooms & bathrooms
- Sky+, TV and telephone outlets to living room, with TV outlets to all bedrooms

## SECURITY & WARRANTIES

- Video entryphone system to all apartments
- Monitored CCTV system
- 10 year NHBC warranty
- Two year 24/7 emergency cover
- Comprehensive induction with dedicated Customer Service Manager



Specification details are correct at time of going to print but are for guidance only and remain subject to change. Exact fittings and finishes are subject to availability at time of installation. Computer generated images of typical interior styles at The Liberty Building and photographs of previous Telford Homes developments.



# UNRIVALLED CUSTOMER SERVICE

99% OF CUSTOMERS SURVEYED  
WOULD RECOMMEND US\*

THE TELFORD HOMES BRAND DELIVERS HIGH QUALITY, HIGHLY DESIRABLE  
NEW HOMES THAT ARE SUPPORTED BY FIRST-CLASS CUSTOMER SERVICE.

Telford Homes Plc is a leading London-focused residential property developer. The company specialises in creating, designing and building innovative landmark developments in some of the most desirable and sought after locations in the capital. The emphasis of a Telford Homes project is always focused foremost upon quality, luxury and exclusivity. A high specification, combined with some of the finest designer names, ensures that each individual property meets or exceeds the most demanding expectations. Architectural innovation and excellence ensures a true landmark development, while a fresh and imaginative approach to communal areas further ensures a truly luxurious lifestyle experience. That is why 99%\* of customers surveyed in the first nine months of 2015\* would recommend Telford Homes to their friends and family.

(\*Independent satisfaction survey results average for the first nine months of 2015.)

Tel: +44 (0)1992 809800

[www.telfordhomes.london](http://www.telfordhomes.london)

Telford Homes Plc  
Telford House, Queensgate, Britannia Road, Waltham Cross, Herts EN8 7TF.



These particulars are for illustration only. We operate a policy of continuous improvement and individual features such as kitchen and bathroom layouts, doors, windows and elevational treatments may vary from time to time. Specification details are for guide purposes only and remain subject to change without prior notice. Should a replacement be required this will be to an equal or higher standard. Consequently these particulars should be treated as general guidance only and cannot be relied upon as accurately describing any of the Specified Matters prescribed by any order made under the Property Misdescriptions Act 1991. Nor do they constitute a contract, part of a contract or a warranty. The Liberty Building is a marketing name and may not form part of the final postal address. Computer generated images are indicative only and may be subject to change. Details correct at time of going to print E and OE.



